

Book Description

"Mind Meets Machine: Exploring Cognitive Science with AI" serves as a comprehensive guide to the intersection of artificial intelligence and human cognition, tailored for computer science faculty and AI enthusiasts. This book explores into how AI systems emulate and differ from human thought processes.

The historical evolution of AI is explored, tracing its journey from early symbolic systems to contemporary deep learning models. This historical context provides a foundation for understanding modern AI advancements.

The book examines the complexities of language and communication, detailing how AI systems understand and generate human language. Challenges and breakthroughs in natural language processing are highlighted, showcasing the ongoing efforts to enhance machine communication.

Prompt engineering is a focal point, demonstrating how well-designed prompts can optimize AI responses in various applications. Real-world case studies illustrate the practical impact of prompt engineering across different domains.

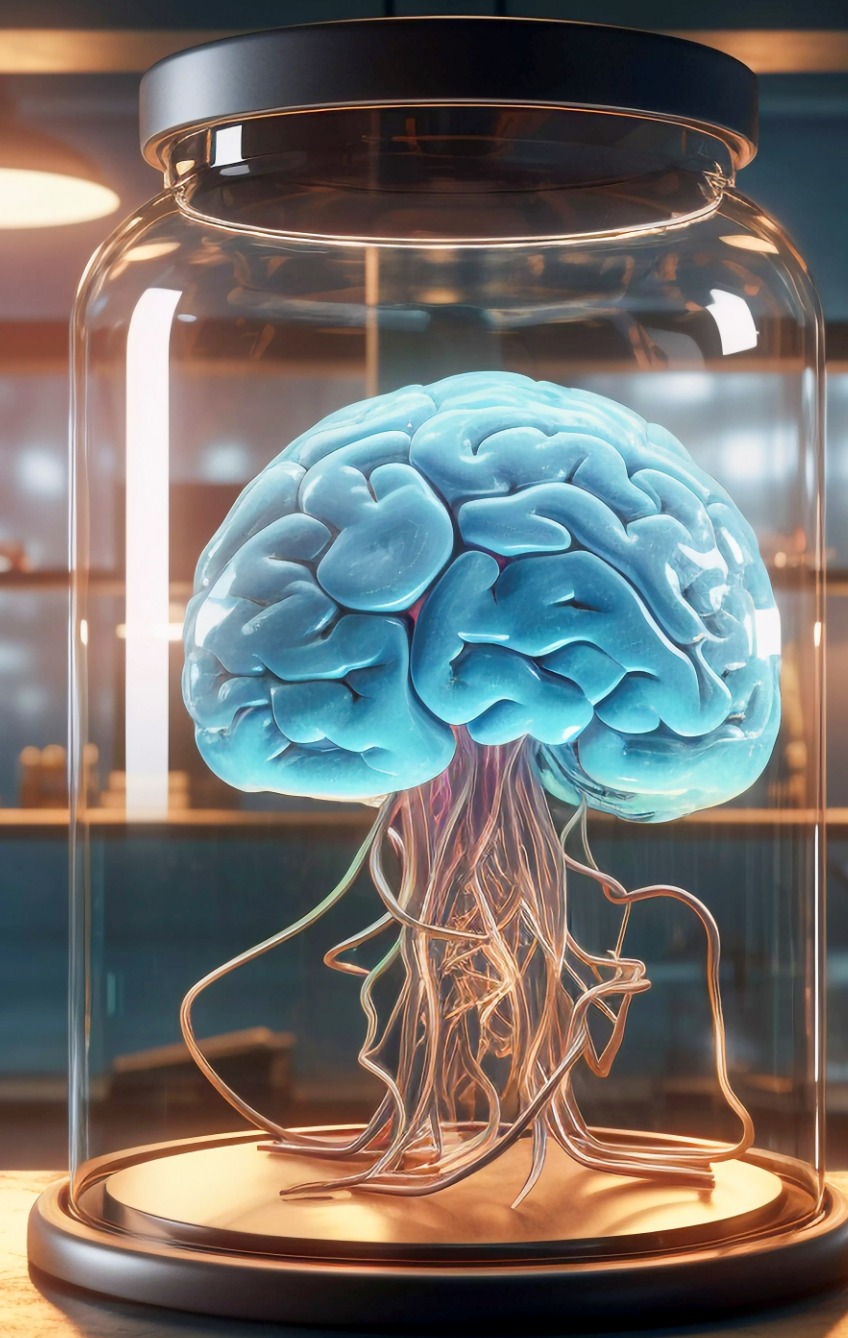
Insights from brain science are used to explore neurocognitive approaches to AI. This cross-disciplinary perspective offers valuable lessons for developing more intelligent and adaptive AI systems. Healthcare applications of AI are discussed, providing practical recommendations for integrating AI into healthcare systems. The potential for AI to improve diagnostic accuracy, treatment planning, and patient care is emphasized.

About the Editors:



Garima Tyagi is an Associate Professor in the School of Computer Application at Career Point University. She is having 25+ years' experience in Higher Education for UG and PG courses. She received post-graduation degrees in Chemistry from Rohilkhand University and Computer Applications from JNRV University respectively. Completed Executive MBA in HR. She received her PhD. Degree in Computer Applications and Technology. Her research area are VOIP, NLP, Algorithms and Soft Computing. Besides having research interest in Computer Science also did a measurable amount of research in the field of TQM, BPR and HRM.

Abid Hussain is an Associate Professor in the School of Computer Application and Dean of Research and Higher Studies at Career Point University, Kota(Raj.) He received a Ph.D. in Computer Application. He is a Chairperson of IPR Cell at Career Point University, Kota. He has 15+ teaching experience of Higher Education including UG and PG courses. His areas of interest are Cloud Computing, Network Security, Open Source Technologies, Web Mining, Web Engineering and Cyber Security. He is also a Research Supervisor in Computer Science & Technology at Career Point University. He published more than 30+ research papers in the reputed UGC Care and Scopus Indexed international journals of computer science and technology. He is also working as a Reviewer and Technical Program Committee Member for various national and international conferences as well as research journals. He has worked as Session Chair and Keynote Speaker in the various International Conferences.

MIND MEETS MACHINE: EXPLORING COGNITIVE SCIENCE WITH AI



 CP PUBLICATION

Also Available at
 


₹ 280.00

9 788197 458934

 CP PUBLICATION

Editor:
Dr. Abid Hussain
Dr. Garima Tyagi

**“MIND MEETS MACHINE: EXPLORING
COGNITIVE SCIENCE WITH AI”**

Information contained in this work has been obtained by Career Point from sources believed to be reliable. However, neither Career Point nor its authors guarantee the accuracy or completeness of any information published herein, and neither Career Point nor its authors shall be responsible for any errors, omissions, or damages arising out of use of this information. This work is published with the understanding that Career Point and its authors are supplying information but are not attempting to render any professional services. If such services are required, the assistance of an appropriate professional should be sought.

CAREER POINT

CP Tower, Road No.-1, IPIA, Kota (Raj.)

Email : publication@cpil.in

No part of this publication may be reproduced or distributed in any form or by any means, electronic, mechanical, photocopying, recording, or otherwise or stored in a database or retrieval system without the prior written permission of the Publishers. The program listings (if any) may be entered, stored and executed in a computer system, but they may not be reproduced for publication.

This edition can be exported from India only by the publisher.

Published by Career Point Ltd.
CP Tower, Road No.-1, IPIA, Kota (Raj.)
Email : publication@cpil.in

Book No. : CPP-747

Preface

"Mind Meets Machine: Exploring Cognitive Science with AI" embarks on a journey into the realm where artificial intelligence converges with human cognition. This book offers a comprehensive yet accessible guide for computer science faculty and AI enthusiasts.

The evolution of artificial intelligence is traced, from its early days of symbolic systems to the emergence of deep learning models. This historical perspective provides a foundation for understanding current advancements and future potentials in AI.

Language and communication are central themes, with a focus on the ability of AI to understand and generate human language. Natural language processing challenges and breakthroughs are explored, illustrating how machines achieve meaningful interactions.

Prompt engineering, a cutting-edge technique, is introduced. Crafting prompts to guide AI responses enhances performance across various domains. Diverse applications and real-world case studies demonstrate the practical benefits of well-designed prompts.

Connections between neuroscience and AI are examined, offering insights into how brain science can inform the development of more intelligent and adaptive AI systems. This interdisciplinary approach enriches the understanding of both fields.

Healthcare is highlighted as a domain with significant AI potential. Practical implications and recommendations for integrating AI into healthcare systems are discussed, emphasizing improvements in diagnostics, treatment planning, and patient care.

Predictive modeling for medical diagnosis is presented through practical examples, using a breast cancer dataset. This hands-on approach showcases AI's capability in making life-saving predictions and demonstrates effective modeling techniques. The exploration of intelligent assistive technology for children with cognitive impairments shows how AI can support learning and daily activities. These technologies aim to help children overcome challenges and reach their full potential.

Comparative analyses of problem-solving and decision-making by humans and AI provide a nuanced understanding of their respective strengths and limitations. Such comparisons are crucial for designing AI systems that effectively complement human abilities. Social interactions between humans and AI are investigated, emphasizing the design of AI that can function seamlessly in social contexts. Understanding these dynamics is essential for integrating AI into human-technology social systems.

The application of AI in mental health is explored, with a focus on early identification and management of anxiety and mood disorders. Intelligent algorithms are highlighted as tools for providing timely interventions, potentially revolutionizing mental healthcare.

"Mind Meets Machine" offers a blend of theoretical insights and practical applications. It is designed to inspire, educate, and spark curiosity among readers. This book invites exploration into the exciting world of AI and cognitive science, providing valuable knowledge and insights for those engaged in the field.



Book Description

"Mind Meets Machine: Exploring Cognitive Science with AI" serves as a comprehensive guide to the intersection of artificial intelligence and human cognition, tailored for computer science faculty and AI enthusiasts. This book explores into how AI systems emulate and differ from human thought processes.

The historical evolution of AI is explored, tracing its journey from early symbolic systems to contemporary deep learning models. This historical context provides a foundation for understanding modern AI advancements.

The book examines the complexities of language and communication, detailing how AI systems understand and generate human language. Challenges and breakthroughs in natural language processing are highlighted, showcasing the ongoing efforts to enhance machine communication.

Prompt engineering is a focal point, demonstrating how well-designed prompts can optimize AI responses in various applications. Real-world case studies illustrate the practical impact of prompt engineering across different domains.

Insights from brain science are used to explore neurocognitive approaches to AI. This cross-disciplinary perspective offers valuable lessons for developing more intelligent and adaptive AI systems. Healthcare applications of AI are discussed, providing practical recommendations for integrating AI into healthcare systems. The potential for AI to improve diagnostic accuracy, treatment planning, and patient care is emphasized.

Predictive modeling for medical diagnosis is covered with practical examples, using a breast cancer dataset to showcase effective methodologies and techniques. This hands-on approach highlights AI's potential in making life-saving predictions. The development of intelligent assistive technologies for children with cognitive impairments is explored, demonstrating how AI can support learning and daily activities, helping these children overcome challenges.

Comparative analyses of human and AI approaches to problem-solving and decision-making are presented. Understanding the strengths and limitations of both perspectives is crucial for designing AI that complements human capabilities. Social interactions between humans and AI are examined, emphasizing the importance of designing AI that can engage effectively in social contexts. This exploration considers the integration of AI into human-technology social systems.

The use of AI in mental health is addressed, focusing on early detection and management of anxiety and mood disorders. Intelligent algorithms are discussed as tools for providing timely interventions and improving mental healthcare.

"Mind Meets Machine" blends theoretical insights with practical applications, making it an essential resource for those interested in the future of AI and cognitive science. Whether teaching, researching, or exploring, readers will find this book both informative and inspiring.

Table of Contents

CHAPTERS TITLES	Page No.
Chapter 1. Evolution of Artificial Intelligence: From Symbolic Systems to Deep Learning Ayush Kr. Yogi	1-6
Chapter 2. Language and Communication: Bridging Natural and Artificial Intelligence Garima Tyagi	7-17
Chapter 3. Unlocking the Power of Prompt Engineering: Diverse Applications and Case Studies Akshita Bhatnagar	18-21
Chapter 4. Neurocognitive Approaches to AI: Insights from Brain Science Amit Sharma	22-32
Chapter 5. Implications with Recommendations on Intelligent Systems in Cognitive Healthcare Abid Hussain	33-38
Chapter 6. Intelligent Assistive Technology for Children with Cognitive Impairment Parveen Kr Goyal	39-47
Chapter 7. Problem Solving and Decision Making: Human and AI Perspectives Parveen Kr Goyal	48-53
Chapter 8. A Unified Model for Human-Technology Social Systems: The Role of Inter-Personal Interactions Arshad Hussain	54-62
Chapter 9. Clinics to Algorithms Using Science and Technology: Exploring Intelligent Solutions for Timely Identification of Anxiety and Mood Disorders Shalini Chawla	63-68

Editors

Garima Tyagi is an Associate Professor in the School of Computer Application at Career Point University. She is having 25+ years' experience in Higher Education for UG and PG courses. She received post-graduation degrees in Chemistry from Rohilkhand University and Computer Applications from JNRV University respectively. Completed Executive MBA in HR. She received her PhD. Degree in Computer Applications and Technology. Her research area are VOIP, NLP, Algorithms and Soft Computing. Besides having research interest in Computer Science also did a measurable amount of research in the field of TQM, BPR and HRM. She has supervised several projects for UG and PG courses and authored and co-authored several publications in journals, Books, and conferences including Research Articles, Chapters, Conference papers, Conference proceedings and Edited Books.

Abid Hussain is an Associate Professor in the School of Computer Application and Dean of Research and Higher Studies at Career Point University, Kota(Raj.) He received a Ph.D. in Computer Application. He is a Chairperson of IPR Cell at Career Point University, Kota. He has 15+ teaching experience of Higher Education including UG and PG courses. His areas of interest are Cloud Computing, Network Security, Open Source Technologies, Web Mining, Web Engineering and Cyber Security. He is also a Research Supervisor in Computer Science & Technology at Career Point University. He published more than 30+ research papers in the reputed UGC Care and Scopus Indexed international journals of computer science and technology. He is also working as a Reviewer and Technical Program Committee Member for various national and international conferences as well as research journals. He has worked as Session Chair and Keynote Speaker in the various International Conferences. He has published 7 patents on the latest technologies in computer science. He has published 3 Authored and 2 edited books for computer science and technology. He is also working as an External Examiner in various Universities for Ph.D. Evaluation. He is an active member of WASET, IAENG,CSTA,ICSES and IASTER also.

Implications with Recommendations on Intelligent Systems in Cognitive Healthcare

Prof. (Dr.) Abid Hussain

ABSTRACT

With the growing usage of electronic health data generated by medical devices during clinical encounters or events, digital healthcare has undergone rapid transformation. However, there is a pressing need to transform this raw data into relevant, expressible, and time-limited information because the vast amounts of electronic health data are still substantially underutilized. To share their perspectives on health-related issues, today's physicians and consumers frequently use online forums. The relevance of public health, particularly in light of the COVID-19 pandemic, is concentrated on creating robust, sustainable health systems and putting policies in place to solve current healthcare issues in both developed and developing nations.

This chapter aims to highlight the use of cognitive analysis to elicit user perspectives. The authors stress recognizing differences in semantic orientation and using cognition to focus the field's new potentials in sentiment analysis. In order to address advancements in the healthcare sector, the chapter examines novel techniques and protocols that help researchers and practitioners with regard to sentiment polarity while utilizing cognitive analytics.

In order to provide tailored, intelligent recommendations and respond to specific requests, the cognitive computing system immediately processes massive amounts of data. In order to enhance human decision-making, cognitive computing in healthcare connects the ways in which computers and the human brain actually overlap. Finally, it will identify critical research questions and design recommendations to accelerate the development of the next generation of cognitive assistants for healthcare.

Content-

Introduction

Why Cognitive Computing in Health Care?

The Role of Intelligent Systems in Cognitive Healthcare

Applications of Intelligent Systems in Cognitive Healthcare

Benefits of Intelligent Systems in Cognitive Healthcare

Challenges and Considerations

Implications of Intelligent Systems in Cognitive Healthcare

Recommendations for Implementing Intelligent Systems in Cognitive Healthcare

Conclusion

Future Directions

Introduction

The integration of intelligent systems in cognitive healthcare marks a revolutionary shift in how medical professionals diagnose, treat, and manage cognitive disorders. These systems leverage advancements in artificial intelligence (AI), machine learning (ML), and big data analytics to offer more precise, personalized, and efficient healthcare solutions. As with any transformative technology, the implications are vast and multifaceted, encompassing ethical, practical, and social dimensions. This chapter delves into these implications and provides actionable recommendations to navigate the complexities of implementing intelligent systems in cognitive healthcare.

Why Cognitive Computing in Health Care?

- Interest in and investment in cognitive computing is fueled by its potential, which is being realized in nearly every industry. For example, technology has enabled driverless cars; marketers use it to target and understand their consumers more effectively; investors use it to improve their investigation and analysis. The healthcare industry, however, is probably going to see the most upheaval as a result of the emergence of cognitive computing. In the end, improved results will lead to a healthier and happier society thanks to new AI systems that enhance the role of physicians and include people. These systems will also decrease prices and increase access. Cognitive computing and AI are changing how businesses affect health and wellness in a variety of ways, from cancer treatment to improved personal training, from clinical trial matching to insulin pumps that can think.
- Researchers may learn new things about the connections between genes, proteins, pathways, phenotypes, and illnesses thanks to cognitive computing.
- Cognitive computing can produce concise summaries that are easy to understand for patients and healthcare professionals, and it can assist in identifying the most important aspects of a patient case.
- To maximize patient recruitment and selection, cognitive talents have been applied to clinical trial matching.
- By helping to create personalized treatment regimens, cognitive computing can improve the experience for both patients and doctors.

Not just at the point of care is the healthcare sector undergoing change. Education and research will gain significantly by indexing the vast and varied body of knowledge included in medical textbooks, research papers, clinical trials, and the human genome. Competent, knowledgeable, and experienced physicians are produced by strong health education institutions in the developed world; however, this is not the case in the developing world. Doctors who don't have access to prestigious medical institutions will be able to obtain the training they need to treat patients if they have more access to the knowledge of the international community. Increased access to knowledge has the potential to transform medical education globally. With information at their fingertips all the time, students might lessen their emphasis on comprehending the biological and chemical

Researchers will be more empowered than ever before thanks to improved access to the wealth of global medical knowledge. Systems for cognitive computing are capable of analyzing hundreds of research publications to find novel connections between genes, proteins, pathways, phenotypes, and illnesses. Researchers will be able to concentrate on the most promising leads and accelerate the speed of breakthrough discoveries since they won't have to spend endless hours poring through mountains of articles in an attempt to identify a needle in a haystack. Unstructured data will be utilized by all areas of medicine in novel ways.

- The reason The radiologists who are attention exhausted might detect interesting abnormalities in pictures more rapidly with the use of computer technology. The possibility of missing anything or squandering time looking for an illusory abnormality is reduced.
- Patients will be able to text or speak updates to their doctors from anywhere at any time. A physician will be informed if any patterns indicate that action is necessary, and these signals can be examined for indications of improving or declining health.
- Studies have already demonstrated the diagnostic utility of examining symptom statements from patients in the context of their demographics. When mental diseases are present, patients' communication can provide important information about the condition or demonstrate how their cognitive abilities are changing over time. The larger

The Role of Intelligent Systems in Cognitive Healthcare

Intelligent systems are designed to simulate human intelligence and perform tasks that typically require human cognition. In cognitive healthcare, these systems can:

1. **Enhance Diagnostic Accuracy:** AI algorithms can analyze complex datasets, including medical histories, genetic information, and neuroimaging results, to identify patterns indicative of cognitive disorders such as Alzheimer's disease, Parkinson's disease, and other forms of dementia. These systems can provide early and more accurate diagnoses compared to traditional methods.
2. **Personalize Treatment Plans:** With the use of machine learning algorithms, physicians may anticipate a patient's reaction to a certain medication depending on their genetic composition, lifestyle, and past medical records. This makes it possible for medical professionals to customize interventions to meet the unique needs of each patient, enhancing results and lowering the possibility of negative side effects.
3. **Monitor Disease Progression:** Intelligent systems can continuously monitor patients through wearable devices and mobile apps, tracking changes in cognitive functions and alerting healthcare providers to any significant deviations. This real-time monitoring enables timely interventions and adjustments to treatment plans.
4. **Support Clinical Decision-Making:** AI-powered decision support systems can assist healthcare professionals by providing evidence-based recommendations for diagnosis and treatment. These systems can quickly process vast amounts of medical literature and clinical guidelines, helping clinicians make informed decisions.

Applications of Intelligent Systems in Cognitive Healthcare

1. **Neuroimaging Analysis:** AI algorithms can process and interpret neuroimaging data, such as MRI and CT scans, to detect abnormalities and changes in brain structure associated with cognitive disorders. These systems can identify subtle markers that might be missed by human radiologists, leading to earlier and more accurate diagnoses.
2. **Cognitive Assessment Tools:** Intelligent systems can administer and score cognitive tests, providing objective and consistent evaluations of cognitive functions. These tools can be used for routine screening, diagnosis, and monitoring of cognitive health.

- 3. Virtual Reality (VR) and Augmented Reality (AR) Therapies:** VR and AR technologies, powered by AI, are being used to create immersive environments for cognitive rehabilitation. These therapies can help patients improve their cognitive skills through interactive and engaging exercises tailored to their specific needs.
- 4. Natural Language Processing (NLP):** NLP algorithms can analyze speech and text to detect linguistic patterns indicative of cognitive decline. This can be particularly useful in diagnosing and monitoring conditions like Alzheimer's disease, where language impairments are common.

Benefits of Intelligent Systems in Cognitive Healthcare

- 1. Improved Accuracy and Efficiency:** Intelligent systems can process large volumes of data quickly and accurately, reducing the risk of human error and increasing the efficiency of diagnostic and treatment processes.
- 2. Early Detection:** By identifying patterns and markers of cognitive decline at an early stage, intelligent systems can enable timely interventions that may slow the progression of cognitive disorders.
- 3. Personalized Care:** AI-driven insights allow for the customization of treatment plans, ensuring that each patient receives the most effective care based on their individual characteristics.
- 4. Cost Savings:** The efficiency and accuracy of intelligent systems can lead to cost savings for healthcare providers and patients by reducing the need for repeated tests and hospital visits.

Challenges and Considerations

- 1. Data Privacy and Security:** The gathering and examination of private patient information is a necessary part of the intelligent systems usage in healthcare. Preservation of patient confidence and adherence to laws such as the Health Insurance Portability and Accountability Act (HIPAA) depend heavily on the security and privacy of this data.
- 2. Ethical Considerations:** The deployment of AI in cognitive healthcare raises ethical questions, including the potential for biased algorithms, the need for transparency in AI decision-making, and the implications of machine autonomy in clinical settings.
- 3. Integration with Existing Systems:** Integrating intelligent systems with existing healthcare infrastructure can be challenging, requiring significant investment in technology and training for healthcare professionals.
- 4. Regulatory and Legal Issues:** The use of AI in healthcare is subject to regulatory oversight, and ensuring compliance with evolving regulations can be complex. Additionally, there are legal considerations related to liability and accountability for AI-driven decisions.

Implications of Intelligent Systems in Cognitive Healthcare

1. Enhanced Diagnostic Accuracy

Intelligent systems have demonstrated the ability to analyze complex datasets more accurately and quickly than traditional methods. For example, AI algorithms can detect early signs of Alzheimer's disease through imaging and genetic data analysis, often before symptoms manifest clinically. This early detection can significantly improve patient outcomes by enabling timely interventions.

2. Personalized Treatment Plans

Machine learning algorithms can analyze individual patient data, including genetics, lifestyle, and treatment responses, to develop personalized treatment plans. This approach can optimize therapeutic efficacy and minimize adverse effects, leading to better patient adherence and outcomes.

3. Improved Patient Monitoring and Management

Wearable devices and mobile health applications powered by intelligent systems enable continuous monitoring of patients with cognitive disorders. These tools can track vital signs, cognitive function, and behavioral changes in real time, providing healthcare providers with actionable insights to adjust treatments as needed.

4. Ethical and Privacy Concerns

The use of intelligent systems in healthcare raises significant ethical and privacy issues. The collection, storage, and analysis of vast amounts of personal health data necessitate stringent data protection measures. Moreover, the decision-making process of AI systems must be transparent and explainable to ensure trust and accountability.

5. Health Disparities

While intelligent systems have the potential to democratize access to high-quality healthcare, they also risk exacerbating existing health disparities. Populations with limited access to technology or those lacking digital literacy may not benefit equally from these advancements.

Recommendations for Implementing Intelligent Systems in Cognitive Healthcare

1. Multidisciplinary Collaboration

Successful implementation of intelligent systems in cognitive healthcare requires collaboration among healthcare providers, data scientists, engineers, and ethicists. This multidisciplinary approach ensures that the systems are designed and deployed in a manner that meets clinical needs, technical feasibility, and ethical standards.

2. Continuous Education and Training

Healthcare professionals must be equipped with the necessary skills to effectively use intelligent systems. Continuous education and training programs are essential to keep pace with rapidly evolving technologies and ensure that healthcare providers can leverage these tools to their full potential.

3. Patient Engagement and Education

Patients should be actively involved in their healthcare journey, including understanding and utilizing intelligent systems. Educating patients about the benefits and limitations of these technologies can enhance their engagement and adherence to treatment plans.

4. Regulatory Compliance and Ethical Standards

Ensuring compliance with regulatory standards and ethical guidelines is paramount when integrating intelligent systems in healthcare. This includes adherence to data protection regulations, obtaining necessary certifications, and upholding ethical principles in AI development and deployment.

5. Robust Data Infrastructure

A robust data infrastructure is critical for the effective functioning of intelligent systems. This includes secure data storage, efficient data processing capabilities, and interoperability between different healthcare systems.

Conclusion

The integration of intelligent systems in cognitive healthcare holds immense promise for transforming patient care through enhanced diagnostics, personalized treatments, and improved patient management. However, it also presents significant challenges, particularly regarding ethical considerations, privacy, and health disparities. By adopting a multidisciplinary approach, prioritizing continuous education and training, engaging patients, ensuring regulatory compliance, and building robust data infrastructure, healthcare providers can harness the full potential of intelligent systems to improve cognitive healthcare outcomes. The future of cognitive healthcare lies in the successful and ethical implementation of these advanced technologies, paving the way for a new era of medical innovation and patient care.

Future Directions

The future of intelligent systems in cognitive healthcare is promising, with ongoing advancements in AI, ML, and data analytics expected to drive further innovations. Some potential future directions include:

- 1. Enhanced Predictive Analytics:** Continued development of predictive models that can accurately forecast the onset and progression of cognitive disorders, enabling even earlier interventions.
- 2. Integration of Multimodal Data:** Combining data from various sources, such as genetic information, neuroimaging, and patient-reported outcomes, to create more comprehensive and accurate assessments of cognitive health.
- 3. Development of Explainable AI:** Creating AI systems that can provide clear and understandable explanations for their decisions, increasing transparency and trust in AI-driven healthcare.
- 4. Expansion of Tele-health:** Leveraging intelligent systems to enhance telehealth services, providing remote cognitive assessments, and therapy to patients who may have limited access to traditional healthcare facilities.