

THINK DIFFERENT, CHANGE THE LIFE



since 1993



**CAREER POINT
UNIVERSITY**

KOTA



080-47250033 | www.cpur.in

Welcome to a **distinctive way of getting education**

The Career Point University develops complete leaders...
leaders who perform beyond academics and are ready to act
analytically, intuitively, ethically and decisively, in any environment.



Career Point University » *An Immersive Learning & Living Experience Spread Across 50 Acres.*

Our Universities are having state-of-the-art infrastructure, best academic facilities and experienced faculty help you to realise your full potential. We follow time-tested internationally acclaimed credit based system. All our courses are designed to provide you excellent learning, requisite expertise, rewarding qualification, practical exposure, hands-on-learning and desired skills for a successful career.



Career Point University, Rajasthan

Campus is spread over 50 acres and situated at education city Kota in the state of Rajasthan. It was established in 2012 by Rajasthan State Legislature under "Career Point University Act". UGC approved government recognised university with the right to confer degree as per the section 2(f) & section 22(1) of the UGC Act, 1956.



Career Point University, Himachal Pradesh

Career Point University, Himachal Pradesh: Campus is spread over 30 acres, surrounded with lower Himalayas at Hamirpur district in the state of Himachal Pradesh, India. It was established in 2012 by the Himachal Pradesh State Legislature under "Career Point University Act". UGC approved government recognised university with the right to confer degree as per the section 2(f) & section 22(1) of the UGC Act, 1956.

Our Recognitions, Approvals and Knowledge Partner



Top Reason to Choose CAREER POINT UNIVERSITY

Selecting a university program is beginning of new chapter in student's life that takes you one step closer to your career goals.

Our advanced facilities, combined with the guidance of our expert faculty, can help turn your raw talent and enthusiasm into the specific skills and knowledge needed to succeed in your chosen career, and to meet life's challenges head-on.

If you Join Career Point University, you can be confident that you'll receive a first-class education with a focus on practical skills and professional relevance, giving you excellent prospects for employment and career development.



INSIDE

- | | | |
|--|---|---|
| 05 CPU v/s Other College | 11 Office of International Affairs | 27 MOU's with Various Institutes |
| 06 CPU Academic System | 12 Student Development | 28 Eminent Personalities Visited at CPU Campus |
| 07 Teaching & Learning | 16 Campus Life | 30 Glimpses of Experiential Learning |
| 08 Faculties | 17 Sports & Recreation | 32 From Campus to Leading Corporate |
| 09 Campus | 18 Training & Placement | 35 CPU Campus Life |
| 10 Research Innovation & Entrepreneurship | 20 Convocation | |
| | 22 Academic & Career Program | |

Career Point University V/s Other Colleges

Features	CPU	Other
Academics		
Credit Based Flexible Curriculum as per New Education Policy	✓	✗
Experienced Faculty with background of IIT / NIT	✓	✗
Replica of IIT System	✓	✗
Open Course / Audit Course	✓	✗
Experiential Learning	✓	✗
Research & Developments	✓	✗
Frequency of Seminars/ Conferences/ Workshops/ Guest Lectures in a Year	25 - 30	0 – 1
Personality Enhancement Program	✓	✗
Industry Oriented Teaching & Corporate Interaction	✓	✗
Personalised Attention	✓	✗
Examination System		
Transparent Examination System	✓	✗
Many chance to Clear Back Papers (Re-major & Summer Semester System)	✓	✗
Continuos Evaluation	✓	✗
Deadline in Result Declaration	15 Days	Not Set
Life Skills Development		
Students Club & committees	✓	✗
Activities by Students & for Students	✓	✗
Regular Visits & Participation in Events by IITs	✓	✗
National Techno-cultural Fest	✓	✗
Training & Placement		
Dedicated Training & Placement Department with Independent Placement Office	✓	✗
Campus Recruitment	✓	✗
Entrepreneurship Development Cell, RoI	✓	✗
Infrastructure		
Laboratories with latest equipments & Software	✓	✗
Centralised IT enabled Library	✓	✗
Student's online services	✓	✗
Air cooled Class Room, Tutorial Rooms	✓	✗
Air conditioned Auditorium, Cafeteria, Gym, Guest House	✓	✗
Indoor Badminton Hall, Play Ground of Cricket, Football, Basketball, Volleyball	✓	✗
Hostel with AC/ Air Cooled Rooms	✓	✗
Transport Facility From all Major Parts of the City	✓	✗

✓ Strictly Implemented ✗ Partially Implemented ✗ Not / Partially Implemented

CPU Academic System - *Knowledge that Works*

Variable Cost
Contributions
Fixed Cost
Profit [EBIT]

Career Point University's academic system works with "Student First" approach and takes all necessary actions to provide best education and facilities to our students. Academic system at Career Point University is built around experimental learning where the students are motivated to understand conceptual framework and apply them.

Career Point follows the world's best IIT education system to support every student to realize their potential with an experiential approach in the academics. The academic system of Career Point University is students centric giving students an opportunity to participate to enhance their knowledge, skills and understanding in multi-disciplinary environment through practical experience to ensure that knowledge imparted to student works to build a strong career.

Key aspects of CPU academic system are:

- Interdisciplinary & Flexible Curriculum
- Project & Industry Integration
- Learning Beyond Classroom
- Active Student Life
- Credit Based Academic System

The academic system of CPU is just not limited to course curriculum but also to inculcate various skills which are essential for student to become professional and leaders of tomorrow.



Teaching and Learning - *Knowledge that Works*

Research into higher education suggests that students learn best when they are actively participating, whether that be through focused listening, discussion, problem solving or explaining to others. The teaching and learning at CPU encourages critical thinking and analysis.

We pride ourselves on the quality of the education we provide. All subjects are taught by experts as per the latest industry requirements, ensuring that outdated techniques are eliminated from the course content. Practical skills are a vital part of any course, and it is important that the laboratory and project work should integrate well with the taught courses. As such, not only laboratory experience but also individual and team project work are given a high priority during the teaching and learning at CPU.

All the courses at CPU are designed as per the needs of industry to ensure you acquire the skills and knowledge necessary in your chosen career.



Faculty - *Brightest Mind to Mentor the Best Brain*

We believe that the students' learning is determined greatly by the quality of teachers they have. To ensure high quality of teaching, our leadership team has handpicked teaching staff; majority of them are from premier institutions having distinguished academic achievements to their credit and are actively involved in teaching, research and consultancy. Our faculty members come from a wide range of backgrounds and bring varying academic experiences and approaches. We also ensure that our faculties are up-to-date with the latest trend in the field of academics and its application in the industry. We also have pool of experts from industry, business, government and research institutions to ensure mix of real world experience and academia. The CPU faculty and staff work together to provide an outstanding learning environment to our students.

One-on-One Mentor-ship

To monitor the performance of the student, each student is assigned one faculty member as a mentor. Mentor records the profile of student with regards to academic performance & participation in extra-curricular activities. Mentor help students build a set of curricular & extracurricular experiences that align with their interests and goals. Students can contact their mentor for any academic or non-academic issue during the session for the solution.



Campus - Academic Infrastructure

Career Point University campus is situated in a serene and pollution free environment. The University has modern and state-of-the-art infrastructure that goes a long way in facilitating a number of services for the students as well as the staff members. The campus has been designed by renowned architects specializing in educational architecture.

We pride ourselves on our dynamic and state-of-the-art campus having facilities which included classrooms equipped with latest teaching aids for focused learning Auditorium which acts as a common ground for students, faculty and corporate personalities for regular interfaces, conferences and other events, library with the wide range of text books, reference books and journals by well-known Indian & International authors; computers & other laboratory with latest equipment, cafeteria, sports facilities, excellent student's amenities and much more. The campus provides an ambience perfectly conducive to teaching, learning and research



Academic Facilities:

- ▶ Classroom
- ▶ Video Lecture Library
- ▶ Laboratories & workshops
- ▶ Seminar & Conference Halls
- ▶ Language Lab
- ▶ Soft skill & Personality Enhancement Lab
- ▶ Moot Court, Open Theater, Reading & Presentation Rooms, Activity Centre etc.
- ▶ Library & e-Library
- ▶ Computer Centre
- ▶ Auditorium
- ▶ Academic Departments
- ▶ Centre for innovation

Other Facilities:

- ▶ Student Welfare & Amenities Centre
- ▶ Guest House
- ▶ Transportation
- ▶ Art & Culture Centre
- ▶ Xerox, Courier & Shopping etc
- ▶ Hostels (Boys & Girls)
- ▶ Cafeteria & Mess
- ▶ Medical and Fitness Centre
- ▶ Sports & Yoga
- ▶ Bank ATM

Research, Innovation & Entrepreneurship

Research

The Career Point University revels in having the highest standards of research with eminent research faculty to match the best in the region. Outstanding research works of our students have been rewarded with international and national recognition and awards.

Innovation

Career Point University has implemented an innovation fund policy to provide initial financial support to students who want to develop something innovative and useful for the society or the mankind. Later the option is always open to file a patent of the work done by the scholars. Hybrid Car and Commercial production of Solar Lamp are the initial appreciable steps taken by our students

Entrepreneurship

The University is inculcating such skills during the learning process so that the future leaders come forward and start their own venture as an "Entrepreneur". Instead of job seekers they should be job provider or employers.



I did my B.Tech from CPU, The best place for learning I can say. The faculties always encourage students to think out of the box. I always wanted to run my own start up & faculties & entrepreneurship development cell at CPU helped me a lot to convert my idea in to reality. Today I have more than 10 members in my team working as full digital marketing company.

Himank Maheshwari, B.Tech (CSE 2019 batch)



Incubation Center for Entrepreneurship Development



The CPU Business Incubator was established in the university campuses to foster Entrepreneurship and Research & Development (R & D) among students.

It has collaborations with the Institutions Innovation Council, New-Delhi, MSME Business Incubation Jaipur, Institute for Industrial Development New-Delhi and Department of Industry Govt of H.P. under the Chief Minister's Start-up/Innovation Projects/New Industries Scheme.

A Memorandum of Understanding (MoU) was signed with these institutions to undertake and promote entrepreneurial activities in the region.

The funds to the tune of rupees 80,00,000 (Eighty lakhs) were provisioned to give support for entrepreneurial & managerial development of Small and Medium Enterprises (SMEs) to undertake and promote entrepreneurial activities in the region.

The incubation centers are equipped with the following facilities & support services:

- ♦ Infrastructure & co-working space
- ♦ Advisory and mentoring support
- ♦ Technical lab/workshop facilities
- ♦ Administrative & secretarial support
- ♦ Networking opportunities and connections with industry professionals and investors
- ♦ Funding assistance from Department of Industries and angel investors



Office of International Affairs (OIA)

Office of International Affairs:

The Office of International Affairs (OIA) at CPU manages the various aspects of the Institute's international engagement.

OIA takes various initiatives which are aimed to build cross-cultural competency and advocates a sense of global citizenship amongst students, faculty members, researchers and other professionals.

Some of these initiatives are:

- w International Admissions
- w Multi Campus Programs with Credits Transfer
- w Content Integration & Twinning Programs
- w Research Collaborations
- w Faculty Exchange and Training Program

OIA is in-charge of coordinating all international activities, advancing a strategic plan for internationalization, fostering & nurturing international partnerships.

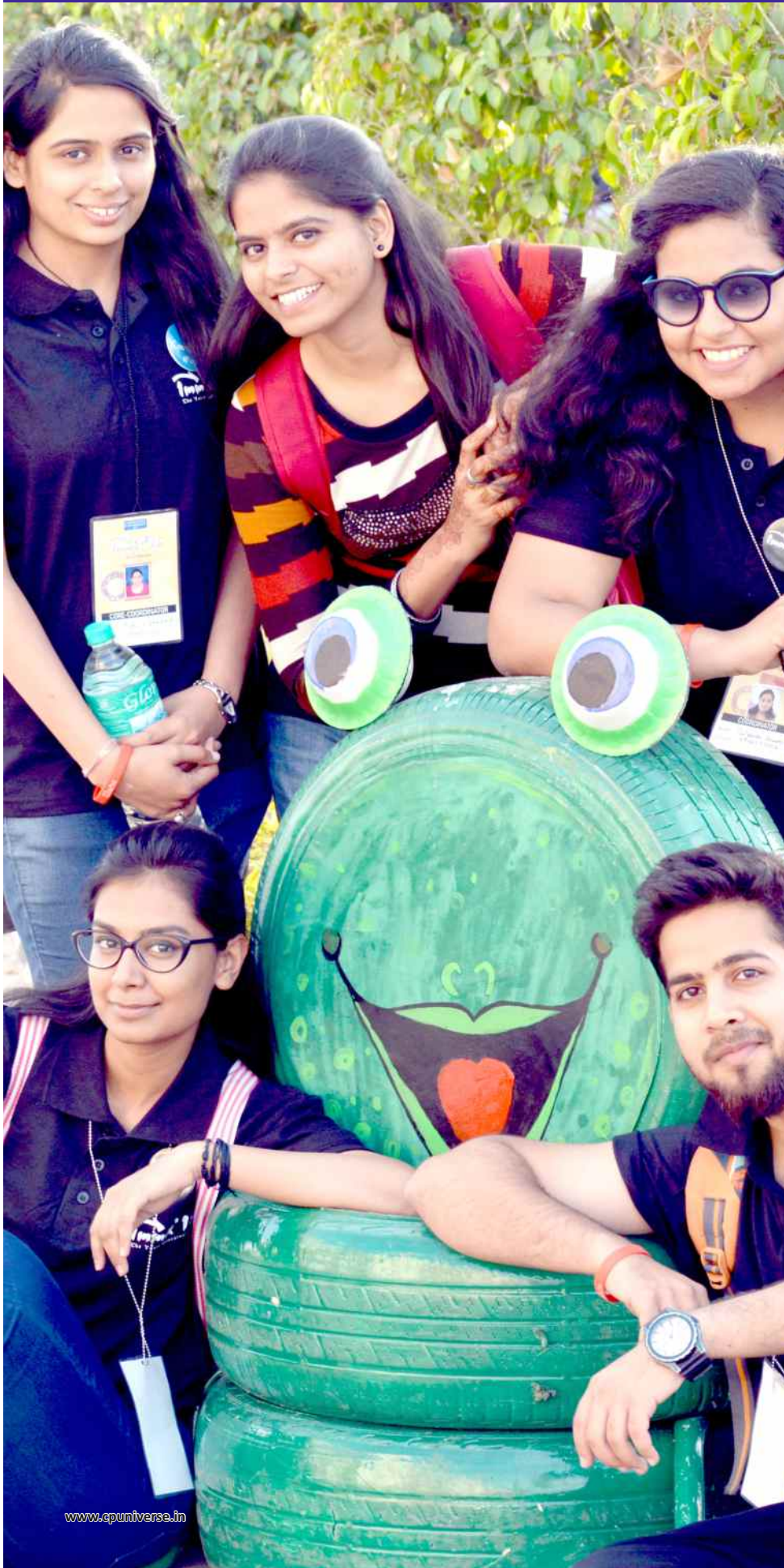
International Student Admission

CPU welcomes students and interns from different parts of the world. With its global outlook, CPU offers learning opportunities both inside and outside the classrooms and provides an ideal platform to international students to pursue higher education and share experiences.

The Office of International Affairs is nodal point for one point contact for all international students in case they require any support.



Campus Life



Residential Facilities & Living on Campus

Residing on campus offers you a sublime and serene environment conducive to learning. Our hostels and student facilities are conveniently located within an easy walk to classes, library, computer labs and hobby & club activities.

When you live on campus, you can attend a sporting event, spend quality time with your friends. By living on our campus you will have many opportunities to enrich your experience through many activities, as well as have access to resident staff to help you in your career pursuits.

- ◆ Hostel Facility
- ◆ Mess
- ◆ Sports Facilities & Gymnasium
- ◆ ATM
- ◆ Cafeteria
- ◆ WiFi Access
- ◆ Transport Facility



Sports and Recreation



Want more energy and better concentration? Then getting active is the answer! At Career Point we believe staying fit is not only beneficial for the body but also for the mind. Sports and recreation activities plays a vital role in overall development of the students. Outdoor sports are as essential as indoor recreation to keep students stress free. Students refresh themselves by indulging in outdoor games like football, cricket and hockey. For those who prefer the indoors there are facilities for table tennis, chess and carom etc Students can also use health clubs and other facilities.

- ♦ Football
- ♦ Badminton
- ♦ Cricket Ground
- ♦ Health Clubs
- ♦ State of the art courts for Basketball, Tennis & Volleyball
- ♦ Indoor Games facilities like Table Tennis, Chess



Training and Placement Cell



Utmost importance is given to the training & placement related activities to ensure that all the graduating students receive the best placements. For this university has dedicated Training and Placement department.

Training and Placement Cell works round the year and closely coordinates with various organizations and corporate houses to know their training & recruitment schedule, process and plans. It conducts several placement activities like Campus Placement, Job Fairs, expert lectures from Industry professionals etc. Training and Placement Cell also conducts mock interviews, GD and provides soft skills training before formal placements.



Placement Highlights

No. of
Candidates Placed

2550+

Candidates
placed so far

Companies
tie-ups

350+

Companies
visited so far

Highest Salary
Package

12.50

Lakh per
Annum

Training &
Placement

100%

Assistance



World Pharmacy Day Celebration at CPU

Student Development *Academic*

We understand that student's success is not solely defined by grades - in today's world students must have excellent life skills. Skills like - leadership skills, team skills, decision making, ability to think on feet, presentation skills, analytical bent of mind, innovation, Pleasing personality, communication skills, positive attitude etc. are few of the qualities which we aim to develop among the students through various student development programs hence enabling them to effortlessly face the challenges of corporate world.



Wildlife Awareness Program



Expert Lecture on
Business Opportunity in Beekeeping



National Seminar on Juvenile Justice System



Int'l Conference on Emerging Trends in Pharmacy



Project Presentation



Student Development

Technical

Learning Beyond Classroom

CPU encourages students to actively engage in various activities for intellectual development. Various events like Academic Conferences, Paper Presentation, Project, Tech-Exhibitions and participation in IITs events. Experts Lectures, Technical Workshops & Seminars, industrial Visit and working on Live Projects complement classroom learning and foster academic & technical leadership of students.



Plant Identification Workshop
by Botany Dept.



Model Presentation in Science &
Technology Exhibition



Antiseptic Solution Made by Pharmacy Students



Moot Court Competition



RAWE Training at Agri. Research Centre, Dehradun



CPU Students Performing in Thomsby by IIT Bombay

Student Development

Social

CPU motivates students to participate in community services & social work. Participation in such events has many positive effects on student's personality & make them responsible professional.



Physiotherapy Health Checkup Camp



Plantation in CPU Campus



Blood Donation Camp



Students Serving in Government School



Seed Distribution to Promote Commercial Farming



Live Concert by Arya QK

Student Development

Cultural

To felicitate learning beyond classroom and to take students' hobby to the next level many cultural and recreational activities are organised through the year by student committees. Largest techno-cultural annual event of the region 'Immix' is organised where students learn many life skills like managerial skills, communication skills, negotiation skills, financial skills, team leading etc.



Milind Gaba during Star Night



Traditional Folk Dance in Immix 2020



Niladri Kumar Performing at CPU Auditorium



Battle of Bands



Cine Sandhya during Immix 2019

From Campus to Few of Our Proud Alumni

Leading Corporate working in Top MNCs

STUDENT'S SPEAK



Training & Placement Cell works really very hard on students and that is why CPU has highest placement record in Hamirpur. I thanks my professor & T & P cell for providing me the best learning environment & exposure to industrial training.

Shilpa Kumari Working with **National Centre for Disease Control, Delhi, Govt. of India**

It's been a privileged to be part of Career Point University as a Scholar. Regular classes, labs & training sessions helped me to be a job ready. Training and Placement Cell helped me to gain more confidence and providing us the way to crack interviews and debates, group discussion etc. So with the help of this I got many bright career options. Thanks to CPU Team.

Ambika working with **xerox**



At Career Point University I have developed many skills. I participated in many co-curricular activities. As a part of Immix I was student coordinator for the entire event. I have hosted many events in CPU like seminars and conferences. These activities has groomed my personality many folds. With the best mix of academics and co-curricular activities I could get the job in Microsoft EPS. Overall it has been a great experience and learning at Career Point University.

Romish working with **Microsoft**

At CPU I and Sanjeev became good friends during studies. Here we received the best curriculum in BCA and MCA which gave us motivation to run our own startup. We share our Idea to Dr. Abid Sir who guided us in every step of starting our own startup in 2020 we have registered our startup The Device Doctor in the domain of Software development, artificial intelligence and machine learning. We have completed more than 100 projects in two years including a project of Government of Haryana.

Hemant, founder **Device Doctor**



I participated in many activities like sports league, workshops & lead the hospitality team for various national & International seminars & workshops. Training & Placement Cell developed me in such a way that i had been able to crack Axis Bank interview in first attempt.

Neeraj Dhiman Working with **AXIS BANK**



TANMAY BHUSHAN
working with **Apple**



ARVIND SHARMA
working with **amazon**



PRIYAMVIDA SAXENA
working with **IBM**



SUKH SHARMA
working with **BAJAJ FINSERV**



RUPAL RAJAWAT
working with **Infosys BPM**



KOKILA KUMARI
working with **accenture**



BHUPEN SHARMA
working with **Bank of America**



AVINASH KUMAR
working with **Alembic**



ASHISH KUMAR
working with **HCL**



SHARMEEN SHEIKH
working with **WIPRO**



MUDIT
working with **PHILIPS**



ATUL SHARMA
working with **JW MARRIOTT**



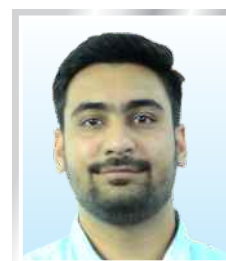
KUNIKA JETHWANI
working with **jaro education**



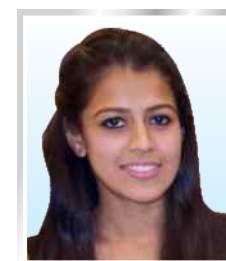
GARIMA BISHT
working with **Collabera**



ARPIT HAWA
working with **Capgemini**



Palkit Badala
working with **BYJU'S**



SAKSHI GUPTA
working with **IIFL**



RAJAT RANA
working with **K**



SIMERPREET KAUR
working with **FiveS Digital**



PRIYA LAKHOTIA
working with **UPGRADE**

Convocation

Many faces of success



CAREER POINT UNIVERSITY



Convocation Ceremony is an integral part of formal course completion where the chancellor confers of the degree to the graduate & post graduate students.





Academic and Career Programs

We educate students on both professional development and degree-awarding courses. They come either to enhance an already chosen career, or to move to a new one. We bring a wide array of multi-disciplinary skills to address a number of fields. Project where students will aim to resolve real world problems. The emphasis is on problem solving, teamwork and application of knowledge. The design and execution of courses makes them truly interactive. We have created a student centered learning environment where students with talent & ambition drive transform their dreams into reality.



Skill & Employability Enhancement Program (SEEP)

Communication | Presentation | Interview | Management | Confidence Building

Each student undergoes through SEEP. This program includes various courses focusing on Personality Enhancement, Employability Enhancement Job Specific skills development & Soft Skills Development. This ensures our graduates possessing a right blend of knowledge, skills and attitude to be successful.

Career Point University Offers Various Courses under following Schools:

- Career Point School of Engineering and Technology
- Career Point School of Computer Application
- Career Point School of School of Commerce and Management
- Career Point School of Health and Allied Sciences
- Career Point School of Agriculture
- Career Point School of Legal Studies and Governance
- Career Point School of Basic and Applied Science
- Career Point School of Library and Information
- Career Point School of Education
- Career Point School of Arts and Humanities

Course Fee (Session 2023-24)

Courses	Course Fee (INR) for Students from India/Afganistan/Nepal/Bhutan/Bangladesh/Sri Lanka						International Students In USD			
	Fee Scheme	Tuition Fee	Exam Fee	Development Fee	Caution Fee	Total Fee	Tuition Fee (Per Sem)	Exam Fee (Per Sem)	Development Fee (Per Sem)	Total Fee
Course After Class 10th or Equivalent										
Polytechnic Diploma in Engineering (DE)	Semester	16000	2000	1500	3000	39000	750	100	200	2100
Course After Class 12th or Equivalent										
B.Tech (CS)	Semester	53000	3000	8000	3000	128000	1200	100	200	3000
B.Tech (AI, DS)/ (ML)	Semester	59000	3000	8000	3000	140000	1400	100	200	3400
BBA	Semester	24000	3000	2000	3000	58000	750	100	200	2100
BBA (Data Analytics & Visualization)	Semester	33000	3000	2000	3000	76000	850	100	200	2300
BHA - Hospital Administration	Semester	24000	3000	3000	3000	60000	750	100	200	2100
BCA (Bachelor of Computer Application)	Semester	22000	3000	3000	3000	56000	750	100	200	2100
BCA (Data Science)	Semester	33000	3000	3000	3000	78000	850	100	200	2300
BCA (Cloud Computing)	Semester	33000	3000	3000	3000	78000	850	100	200	2300
B.Sc (IT)	Semester	22000	3000	3000	3000	56000	750	100	200	2100
B.Com	Semester	18000	3000	1000	3000	44000	500	100	200	1600
BA (Political Sc., Sociology, Public Ad., History) English Lt., Geography, Psychology, Hindi Lit.)	Semester	8000	3000	1000	3000	24000	400	100	200	1400
BA (International Relation)	Semester						400	100	200	1400
BBA + LLB	Semester	22000	3000	2000	3000	54000	750	100	200	2100
B.Sc-B.Ed (Integrated) - Maths	Semester	19000	3000	5000	3000	54000	600	100	200	1800
B.Sc-B.Ed (Integrated) - Biology	Semester	19000	3000	5000	3000	54000	600	100	200	1800
B.Sc - Maths	Semester	11000	3000	1000	3000	30000	750	100	200	2100
B.Sc - Biology	Semester	11000	3000	1000	3000	30000	500	100	200	1600
B.Sc Agri	Semester	30000	3000	8000	3000	82000	750	100	200	2100
B.Sc + MBA (Agri)	Semester	30000	3000	8000	3000	82000	750	100	200	2100
BPH / BSc - Public Health	Semester	11000	3000	1000	3000	30000	500	100	200	1600
B.Sc - Nutrition & Dietetics	Semester	11000	3000	1000	3000	30000	500	100	200	1600
B.P.T. (Physiotherapy)	Semester	27000	3000	5000	3000	70000	1400	100	200	3400
B.Pharm	Semester	39000	3000	8000	3000	100000	1200	100	200	3000
B.Pharm (Lateral)	Semester	39000	3000	8000	3000	100000	1200	100	200	3000
D.Pharm	Semester	52000	3000	10000	3000	130000	1200	100	200	3000
After Graduation										
M.Tech [CE] (Full/Part Time)	Semester	46000	3000	4000	3000	106000	1200	100	200	3000
M.Tech [CSE] (Full/Part Time)	Semester	46000	3000	4000	3000	106000	1200	100	200	3000
M.Tech [EE] (Full/Part Time)	Semester	46000	3000	4000	3000	106000	1200	100	200	3000
M.Tech [ME] (Full/Part Time)	Semester	46000	3000	4000	3000	106000	1200	100	200	3000
MA (Political Science, Public Administration, Geography, English, Sociology, International Relation, History, Hindi)	Semester	8000	3000	1000	3000	24000	400	50	200	1300
MSW	Semester	8000	3000	1000	3000	24000	400	50	200	1300
MA (Education)	Semester	12000	3000	2000	3000	34000	400	50	200	1300
MBA (Master of Business Administration)	Semester	53000	3000	3000	3000	118000	1000	100	200	2600
MBA (Data Analytics & Visualization)	Semester	65000	3000	3000	3000	142000	1200	100	200	3000
MBA *	Semester	65000	3000	3000	3000	142000	1200	100	200	3000
Master of Hospital Administration (MHA)	Semester	53000	3000	3000	3000	118000	1200	100	200	3000
PGDM (PG Diploma in Management)	Semester	50000	3000	2000	3000	110000	1200	100	200	3000
MCA	Semester	25000	3000	2000	3000	60000	800	100	200	2200
MCA (Data Science)	Semester	34000	3000	2000	3000	78000	1200	100	200	3000
PGDCA	Semester	6000	3000	0	0	18000	400	100	200	1400
M.Sc (IT / (Computer Science)	Semester	25000	3000	2000	3000	60000	800	100	200	2200
LL.B.	Semester	16000	3000	2000	3000	42000	700	100	200	2000

*Specialization - Data Analytics & Visualization, Banking & Capital Market, Supply Chain Logistic Mgmt., Family Business & Entrepreneurship, Hospital Management/ Health Management

Courses	Course Fee (INR) for Students from India/Afganistan/Nepal/Bhutan/Bangladesh/Sri Lanka						International Students In USD			
	Fee Scheme	Tuition Fee	Exam Fee	Development Fee	Caution Fee	Total Fee	Tuition Fee (Per Sem)	Exam Fee (Per Sem)	Development Fee (Per Sem)	Total Fee
LLM	Semester	10000	3000	2000	3000	30000	700	100	200	2000
Post Graduate Diploma in Law	Semester	11000	3000	1000	3000	30000	700	100	200	2000
M.Sc Agriculture	Semester	30000	3000	6000	3000	78000	800	100	200	2200
M.Sc Physics	Semester	13000	3000	2000	3000	36000	650	100	200	1900
M.Sc Chemistry	Semester	13000	3000	2000	3000	36000	650	100	200	1900
M.Sc Maths	Semester	13000	3000	2000	3000	36000	650	100	200	1900
M.Sc Botany	Semester	13000	3000	2000	3000	36000	650	100	200	1900
M.Sc Zoology	Semester	13000	3000	2000	3000	36000	650	100	200	1900
B.Lib/ B.Sc-Lib. Sc	Semester	8000	3000	1000	0	24000	700	100	200	2000
M. Lib/ M.Sc-Lib. Sc	Semester	8000	3000	1000	0	24000	700	100	200	2000
MPH / M.Sc - Public Health	Semester	48000	3000	2000	3000	106000	1200	100	200	3000
MPT (Ortho, Neuro, Sports)	Semester	38000	3000	4000	3000	90000	1200	100	200	3000
M.Sc (Environment Science)	Semester	12000	3000	2000	3000	34000	650	100	200	1900
M.Sc (Nutrition & Dietetics)	Semester	17000	3000	2000	3000	44000	650	100	200	1900
M. Pharm (Pharmaceutics)	Semester	33000	3000	3000	3000	78000	1200	100	200	3000
M. Pharm (Pharmacology)	Semester	33000	3000	3000	3000	78000	1200	100	200	3000
Diploma in Library Science	Semester	7000	3000	1000	3000	22000	500	100	200	1600
B.Sc Nursing	As per Council						1200	100	200	3000
GNM Nursing	As per Council						1200	100	200	3000
After Post Graduation										
Ph.D	Semester	1,82,000 - 3,20,000					1100	0	0	2200

Admission & Other Fee (One Time) : ₹ 5000 for students from India / Nepal / Bhutan / Bangladesh / Sri Lanka / Afghanistan
: \$ 200 (USD) for UG / PG Course for students from other countries
: \$ 100 Misc Support Fee (One Time)

College Transfer / Migration:

Students seeking change from their existing college to CPU, may apply for the College Transfer. For more details contact: 080-47250033 or e-mail at: info@cpuniverse.in

CPU Offers Two Degree Simultaneously

As a visionary step, University Grants Commission (UGC) has allowed that students can pursue two academic degrees simultaneously.
For FAQ and other details about Two Degree at CPU contact city office or visit: apply.cpur.in/two-degree

Scholarship & Other Benefits [Only for Indian Students]

1. Early Admission Benefit (All Courses):

Admission Taken & Full Fee Deposited Before Below Date	Early Admission Benefit (One Time)	
	B.Tech/M.Tech/MBA/M.Pharm/BPT/MPT	Other Courses
Till 15 th July	5000	3000
Till 31 st July	3000	2000
Till 15 th August	2000	1000
After 15 th August	No early admission benefit	

- Early Admission benefit is additional to the scholarship under any other criteria.
- Student who join the course early may attend English Language & Personality Enhancement course (at CPU, Kota) before the commencement of classes schedule to begin in 2nd week of June. No fee shall be charged for this.

2. For B.Tech Program

■ On the basis on performance in JEE (Main) / State Entrance Test / 12th Board performance

% in Class XII (PCM) [1]	Scholarship in Tuition Fee
Above 95%	60%
90% - 94.99%	50%
85% - 89.99%	40%
80% - 84.99%	30%
70% - 79.99%	20%
60% - 69.99%	10%

3. For M.Tech/MBA/M.Pharm/MPT

% in Graduation [1]	Scholarship in Tuition Fee
Above 90%	40%
85% - 89.99%	30%
75% - 84.99%	15%
60% - 74.99%	10%

4. For Engineering Diploma/Other Undergraduate/PG Course/ B.Sc+B.Ed

% in Qualifying Class [1]	Scholarship in Tuition Fee
Above 90%	20%
85% - 89.99%	10%
75% - 84.99%	5%

5. Reduction in Scholarship after 1st Cutoff Date

- Till 31st July 2023 (1st Cutoff Date): No Deduction.
- 01st August to 31st August 2023: 5% Deduction in Merit Scholarship.
- 01st September to 30th September 2023: 10% Deduction in Merit Scholarship.
- After 30th September 2023: No Scholarship

6. [1] Conversion Criteria: %age = CGPA x 9.5 | [2] No scholarship will be provided for D.Pharm, B.Sc (Agri) & Ph.D program.

7. For Ex-CPU Students

- 10% rebate in tuition fees for the duration of the course OR
- Above mention scholarship whichever is higher
- Except early admission benefit

8. Other Benefits

- Education Loan Support:** Career Point University provides assistance & guidance in providing education loan to students.
- Online Support:** Parents / Student can get all the information regarding student's performance in semester / internal exams, his / her attendance, fee deposition status, can register grievance or pay fees online through Student Parent Zone.
- Student Support:** For Any Grievances mail to studenthelpdesk@cpur.edu.in

9. Government / Non-government Scholarship: Career Point University does not take responsibility for any Government / Non-government scholarship other than scholarship provided by the University

Note:

- Merit scholarship is linked with admission date (irrespective of date of result declaration)
- To avail merit scholarship, student has to submit supporting documents in original along with 1 set of photocopies.
- No Scholarship for D Pharma, B.Sc Agriculture

How to Apply for Admission

- In Person:** Purchase application form University Campus or City Admission Office on cash payment of ₹ 1000. Fill the form and submit along with relevant documents.
- Online:** Apply online at www.cpur.in and pay application fee through Net Banking / Credit Card / Debit Card.

Hostel Facility & Fee

It's always recommended by experts that student should stay in hostel while they are pursuing their higher studies. Few of the advantages of hostel life are -

- You get more time for studies, activities and you save time in traveling.
- Hostel life gives you sense of responsibility as well as independence.
- Hostel life teaches you team work, sense of unity and adjustment etc.
- All round development of personality is possible during hostel life. In IITs, more than 90% students live at hostel.

Hostel	Location	Occupancy	Type	Indian Students		International Students	Facilities Includes	Other Charges (in ₹)
				Security	Annual Fee (in ₹)	Annual Fee (in USD)		
Career Point University, Kota (Rajasthan)								
Boys	Nilgiri Hostel at CPU	Single	Air-Cooled	5000	70000	1200	Lodging, Mess, Security	Electricity Charges Extra for AC room over certain consumption
		Double			64000	1000		
	Nalanda House at CPU	Single	AC	-	-	2200		
		Double			-	1600		
Girls	At CP-Gurukul Campus	Single	AC	-	90000	1500	Lodging, Mess, Laundry, Security, Transport to Campus	
		Double			80000	1300		

Note:

1. Above Fee is for two semester (10 months). Over stay Fee shall be charged extra on pro-rata basis.
2. Exemption from mess facility at Kota is not allowed. Mess charges include Breakfast, Tea, Lunch and Dinner.
3. Student has to take hostel for both semesters.
4. Hostel fee may be revised by 10 to 15% every year.
5. If a student avail hostel facility during summer, then he/she has to pay fee separately for the summer semester.

Fee Deposition Method

1. **In Person:** Visit Career Point University City Office at Road No 1, IPIA, Kota and pay Fee.
2. **Online:** Visit website www.cpur.in and pay fee online (transaction charges may apply).
3. **Anywhere in India in ICICI Bank:** Deposit the course fee using Fee Deposition Challan directly in ICICI bank anywhere in India. You may download Fee Deposition Challan from website.

Note: After fee deposition through mode 2 & 3, please email details at cpuraccounts@cpur.edu.in or call us on 8094157999.

Fee Refund Policy

1. Full fee except Admission Fee will be refunded in case student withdraw admission before the start of classes.
2. No refund is permissible in case the student withdraws after start of the classes.
3. Admission fee is not refundable under any circumstances.
4. Caution money will be refunded in full.
5. Hostel Fee will be refunded after proportioned deducting of fee till the month of withdrawal. If student leave hostel without completing session then caution money shall not be refunded.
6. Request to withdrawal and fee refund should be made on the prescribed application form available at the admission/registrar office. Along with fee refund application, student has to submit the ID card, Original Fee Receipt & Due clearance Certificate.
7. Refund will be processed by the finance office of the university upon receiving approval from the Director (Admission) and will be paid by crossed cheque in the name of the student or father/guardian after 90 days from the date of receipt.
8. All dispute pertaining shall fall within the jurisdiction of Kota (Rajasthan) and Hamirpur (Himachal Pradesh) for CPU Kota and CPU Hamirpur, respectively. The registrar of the concerning institute shall be legal person for all such matters.

Pay Fee in Installments

To provide ease in fee payment, Career Point University has tie-ups with many financial institutes like Bajaj Finance, Liqui Loans, Propelled, L&T Finance. You may pay through one of these institutions in 6 or 9 Installments at 0% interest rate. To pay fee visit www.cpur.in and pay fee online in No Cost EMI's. For any assistance you may call at 080-47250033

MOUs with Various Institutes



MOU with Sri Karan Narendra Agriculture University, Jobner, Jaipur



MOU with ARTRAC, Shimla (HP) Ministry of Defense, Govt. of India



MOU with ICAR- Indian Institute of Soil & Water Conservation, Research Centre, Kota



MOU with IHBT-CSIR campus at University of Agri. Sciences & Technology of Jammu (SKUAST-J)



MOU with Krishi Van Research Centre, Dehradun



MOU with ICSR Mohali



MOU with Samatrix.io



MOU with GESCO Healthcare Pvt. Ltd and Allign Consultancy Pvt. Ltd



MOU with Department of Agriculture (Extension), Govt. of Rajasthan, Kota



MOU with Himachal Pradesh University



MOU with Vertus Foundation, New Delhi



CPU Hamirpur IGFR (Indian Grassland & Fodder Research Institute) Jahnsi, Govt. of India



MOU with Vidhya Bhawan Krishi Vigyan Kendra, Udaipur (Raj.)



MOU with CSIR-Institute of Himalayan Bioresource Tech. (Govt. of India)



MOU with ICSE Mohali

Eminent Personalities @CPU



Mr. Gajendra Singh Shekhawat (Minister of State for Agriculture & Farmers Welfare) Addressing in International Conference for Agriculture at CPU



Hon'ble Vice President Mr. Venkaiah Naidu addressing 9th Indian Youth Science Congress organised by CPU Hamirpur



Sh Anurag Thakur, Minister of State for Corporate Affairs



Hon'ble Mr. Justice M.N. Bhandari Addressing in National Seminar on "Juvenile Justice System in India"



Hon'ble Governor of HP Shri Bandaru Dattatraya & Former Chief Minister Sh. Prem Kr. Dhumal at CPU Campus



Marie Haga, Exc. Director, Global Crop Diversity Trust, Bonn, Germany visited CPU Hamirpur



Prof. Prem Kr. Dhumal Hon'ble Former CM (H.P.) at Inaugural Ceremony of CPU Hamirpur



Mr. Piyush Goyal, Minister of Railways of India



Felicitation of CP Group by Mr. Narendra Singh Tomar, Union Minister of Steel, Mines, Labour and Employment



Hon'ble Mr. Justice Vivek Singh Thakur Addressing in National Seminar on "Understanding Environment & Biodiversity Law"



CPU Chancellor Mr. Pramod Maheshwari Welcomes Central Education Minister Mr. Dharmendra Pradhan



Hon'ble Padma Shri Awardee Dr. Anil Prakash Joshi in National Conference by (NABARD) Govt. of India



Mr. Nitin Gadkari, Minister of Road Transport & Highways of India addressing at CP Auditorium

Experiential Learning @ CPU

Technique of farming without soil

Agriculture Students have demonstrated hydroponic technique of farming that doesn't require soil for growth of plants. In this technique plants get their nutrition only through water. 8 to 10 plants are placed in a series in cylindrical pots and water is passed through a motor & all the minerals of soil are mixed in water in liquid form.



Go Kart for Elite Karting Championship 2017:

Students from Mechanical and Electrical branch jointly developed Go- Kart for Elite Karting Championship 2017 held at Bhopal. This was an international level Go-Karting event for all technical students. Due to their innovative ideas, excellent design and meticulous execution with set technical specifications; CPU students achieved 6th position among more than 100 teams in finale.



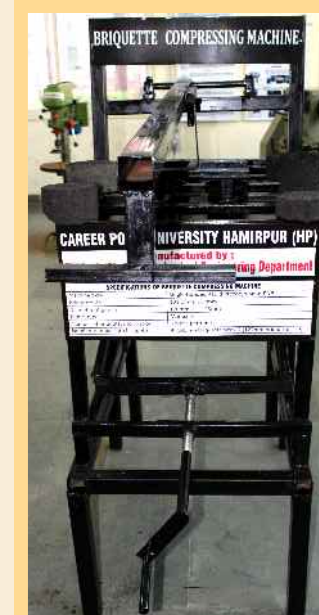
Students Spreading Wings with their Mentors Authored Books:

1. **Effect of Mango Shell and Nut Shell Ash as Pavement Material (ISBN 978-3-330-03578-2)** – by Tiza Toryila Michael, M.Tech Student and Er. Sitesh Kumar Singh, Assoc. Professor
2. **Comparison of Flexural Strength Values of Palm Kernel Concrete** – by TizaToryila Michael, Obam S. Ogah & Ukpong U. Emmanuel, M.Tech students



Patta Making Machine:

There is an ample opportunity for the traditional patravali due to its environment-friendly nature and biodegradability. An attempt of fabricating low-cost and more ergonomic patta making machine is hereby made. The machine is manually operated by a foot pedal, has a fixed upper die and a moveable lower die, and is composed of a heating element.



Briquette Compressing Machine:

- Mass Production of Biomass Briquettes.
- The Machine provides Rapid Prototyping & Mass Production of Biomass Briquettes and it requires less time to fill the patterns.
- The machine can form six briquettes at a time with the involvement of single person.
- The briquettes compression force is high as compare to manually operation, which provides briquettes with high strength, good texture, less water content ratio.



Low Cost Hybrid Multi-Tasking Vehicle by Mechanical Branch students

A group of final year Mechanical Engineering students have developed a hybrid and economic transport vehicle which is beneficial to farmers and traders of small towns and villages. The engine is capable of generating a maximum transmitting power of 10 BHP and it can operate on battery or petrol. The fuel efficiency is 45 km per liter and it can carry a maximum load of 2 tonnes.



Bogie Mechanism: The model was developed as simulation for multi-purpose use in daily life. The design has no springs or stub axles for each wheel, allowing the bogie to climb over the obstacles. This mechanism is suitable for carrying items in shopping malls; one can find a separate place for carrying kids. This mechanism maintains the chassis in a balanced position, and avoids shocks even on an irregular surface.

Electricity Generation from Swing: Mechanical Engineering, B. Tech students conceived and developed innovative idea of generating electricity from the swing.

THE CPU
CAMPUS
LIFE

TRULY
EXTRAORDINARY!





Chancellor's Message

In our efforts to deliver quality & career led education, we put more emphasis on determining one to one contact and also be very much attentive to vital needs of each student. Our faculty team relentlessly monitors progress of every student and guide them accordingly on the way to achieve all success in their life and career ahead.

Pramod Maheshwari [B.Tech, IIT-Delhi]



CAREER POINT UNIVERSITY

Contact Details:

Career Point University, Kota (Raj.)

Campus: Alaniya, Kota - 325 003 (Raj.)

Ph: 080-47250033

website: www.cpur.in | email: info@cpuniverse.in

Career Point University, Hamirpur (H.P.)

Campus: Bhoranj (Tikker-Kharwarian), Hamirpur-176041 (H.P.)

Ph: 080-35339406

website: www.cpuh.in | email: hp@cpuniverse.in

International Helpline No: +91-90791-34716 | oia.cpur.in | oia@cpur.edu.in