



**CAREER POINT**  
**UNIVERSITY**

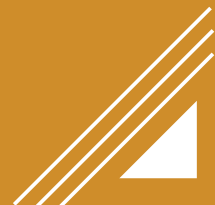


**12** RESPONSIBLE  
CONSUMPTION  
AND PRODUCTION



## RESPONSIBLE CONSUMPTION AND PRODUCTION

Ensure sustainable consumption &  
production patterns



## **SDG 12: Responsible Consumption and Production**

Sustainable Development Goal 12 (SDG 12) focuses on ensuring **responsible consumption and production patterns**. It emphasizes the efficient use of resources, reduction of waste, promotion of sustainable lifestyles, and adoption of eco-friendly technologies. The goal seeks to “do more and better with less” — decoupling economic growth from environmental degradation while improving quality of life for all.

**Career Point University (CPU), Kota**, aligns strongly with this global vision by integrating sustainability principles into its academic, administrative, and community-oriented functions. The University promotes environmental consciousness, efficient resource management, and a culture of sustainability within and beyond the campus. Through its courses, policies, and outreach, CPU nurtures responsible citizens who understand the importance of sustainable production and consumption in achieving long-term environmental balance.

### **University's Commitment**

CPU is deeply committed to sustainable campus development and environmentally responsible practices. The University aims to minimize its ecological footprint while promoting sustainable education and innovation. Its strategic policies ensure that both consumption and production processes on campus align with environmental conservation and resource efficiency.

- Promoting the efficient use of natural resources across all operations.
- Encouraging green infrastructure and clean energy initiatives.
- Implementing waste segregation and management systems.
- Fostering sustainability-oriented education and research.
- Cultivating awareness of responsible lifestyles among students and staff.

### **Campus Initiatives**

CPU has undertaken several initiatives to integrate sustainability into campus life:

#### **1. Waste Management System:**

- Segregation of biodegradable and non-biodegradable waste.
- Composting of organic waste and recycling of paper and plastic.
- Awareness campaigns for waste minimization among students and staff.



## Waste Recycling Systems



## Waste Management Systems



मैसर्स हाइवैली हाउस कीपिंग एंड सिक्योरिटी सर्विसेज

एवं

केरियर पॉइंट यूनिवर्सिटी, कोटा

के बीच कचरा निस्तारण कार्य हेतु अनुबंध

दिनांक [01.05.2023]



## अनुबंध

दिनांक : 1 मई 2023

मैसर्स हाइटी हाउस कीपिंग एंड सिक्योरिटी सर्विसेज,

हाउस नंबर 22, अमृत नगर-2, बोरखेडा, कोटा

विषय : सफाई कार्य का ठेका

उपरोक्त विषयान्तर्गत लेख है कि आपको निम्नलिखित शर्तों के अनुसार कचरा निस्तारण के कार्य का ठेका दिया जाता है -

### 1. ठेका कार्य की दरें :

ठेका का मूल्य एवं कार्य की दरें सलग्न सूची अनुसार स्थायी रूप से निश्चित रहेगी तथा इसमें सभी प्रकार के भुगतान जैसे मजदूरी, इ.पी.एफ. (एम्प्लोयर एवं एम्प्लोयी), इ.एस.आई.सी. (एम्प्लोयर एवं एम्प्लोयी) सम्मिलित होंगे। ठेका अवधि के दौरान कार्य दरों में किसी भी प्रकार की बढ़ोतरी कंपनी को स्वीकार नहीं होगी।

### 2. ठेका अवधि :

कार्य की ठेका अवधि दिनांक 1 मई 2023 से दिनांक 31 अप्रैल 2024 तक होगी एवं भविष्य में यह अवधि कंपनी की आवश्यकता अनुसार 4 माह हेतु निर्धारित दरों पर ही घटाई / बढ़ाई जा सकती है।

### 3. कार्य का नियोजन :

दिए गये कार्य हेतु कंपनी द्वारा बताये अनुसार आप सम्पूर्ण कचरे का निस्तारण करेंगे।

### 4. भुगतान का प्रकार :

बिल का भुगतान मासिक आधार पर किया जायेगा जिसके लिए आपको मासिक बिल कार्य अवधि के पश्चात् 5 दिन में बिल बना कर देना होगा एवं बिल प्राप्त होने पर अगले 5 से 10 कार्य दिवस में भुगतान चेक द्वारा पूर्ण जांच के पश्चात् टी.डी.एस. व अन्य कटौतियों के पश्चात् किया जायेगा।

### 5. ठेकेदार के कर्तव्य / उत्तरदायित्व एवं वैधानिक जिम्मेदारी :

5.1 सरकार के नियमानुसार सम्पूर्ण कचरे का निस्तारण कैम्पस के बाहर जाकर आपके द्वारा किया जायेगा।


5.2 आपको अपना लाइसेंस रजिस्ट्रेशन आदि करवाकर वैधानिक कार्यवाही पूरी करनी होगी एवं समय समय पर जो भी परिवर्तन होंगे उनकी पूर्ति की जिम्मेदारी आपकी होगी।



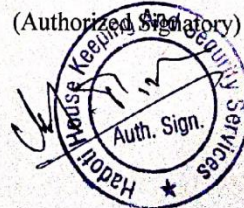
- 5.3 कर्मचारियों की बीमा पोलिसी अथवा अन्य संबंधित पोलिसी लेना आपका दायित्व होगा।
- 5.4 यदि आपकी लापरवाही के कारण कंपनी को कोई कानूनी परेशानी उठानी पड़ती है तो कंपनी के पक्ष के बचाव का खर्चा आपको वहन करना होगा।
- 5.5 यदि आपके कर्मचारी लापरवाही एवं दुराचरण करते पाए गए तो उनकी जिम्मेदारी आपकी होगी एवं उसके फलस्वरूप होने वाले नुकसान का भुगतान आपको वहन करना होगा।
- 5.6 यदि आपका कोई कर्मचारी कार्य के दौरान या आवागमन के समय दुर्घटनाग्रस्त होता है तो इस प्रकार की किसी भी दुर्घटना की जिम्मेदारी आपकी होगी एवं मुआवजे की राशी का भुगतान आपको करना होगा।
- 5.7 आपको अपने कर्मचारियों की चिकित्सा एवं सुरक्षा की पूर्ण व्यवस्था करनी होगी जिसमें प्राथमिक उपचार सुविधा, आकस्मिक चिकित्सा एवं सुरक्षा सम्मिलित है।
- 5.8 आपके द्वारा नियुक्त कर्मचारियों को निर्धारित यूनिफार्म एवं आई. कार्ड. देना अनिवार्य होगा जो कि कर्मचारी ड्यूटी पर धारण करके आयेगा।
- 5.9 आपके द्वारा बाल श्रमिक की नियुक्ति नहीं की जाएगी एवं सभी कर्मचारियों के पहचान पत्र / आधार कार्ड कंपनी में जमा कराने होंगे।
- 5.10 यदि आपका कोई कर्मचारी किसी चोरी / नुकसान में लिप्त या सहायता प्रदान करता पाया जाता है तो उसके खिलाफ दंडनीय कार्यवाही की जाएगी एवं उस कर्मचारी को हटाकर दूसरा कर्मचारी उपलब्ध करवाना होगा। ऐसी अवांछित गतिविधियों के कारण यदि ठेका बीच में ही निरस्त किया गया तो इससे होने वाले नुकसान की भरपाई आपकी धरोहर राशी से की जाएगी।
- 5.11 आपके द्वारा नियुक्त कर्मचारियों का पुलिस सत्यापन करवाकर जमा कराना होगा।
- 5.12 कार्य अवधि के दौरान गुटखा, तम्बाकू या अन्य किसी भी प्रकार के नशे का सेवन पूर्णतः वर्जित होगा। यदि कोई कर्मचारी इसका सेवन या गन्दगी करते पाया जाता है तो दंडस्वरूप 500 रूपए का जुर्माना लगाया जायेगा।
- 5.13 उपरोक्त कार्य का ठेका स्वीकृत या निरस्त करने का सर्वाधिकार कंपनी के पास सुरक्षित होगा एवं समस्त विवादों का न्याय क्षेत्र कोटा होगा।

इस कार्यादेश / अनुबंध की दो प्रतियाँ आपको प्रेषित हैं। दूसरी प्रति पर अपनी स्वीकृति के हस्ताक्षर कर व मोहर लगाकर कंपनी में जमा कराएँ।

केरियर पॉइंट यूनिवर्सिटी, कोटा

  
**REGISTRAR**  
(Authorized Signatory)  
Career Point University  
Kota - Rajasthan

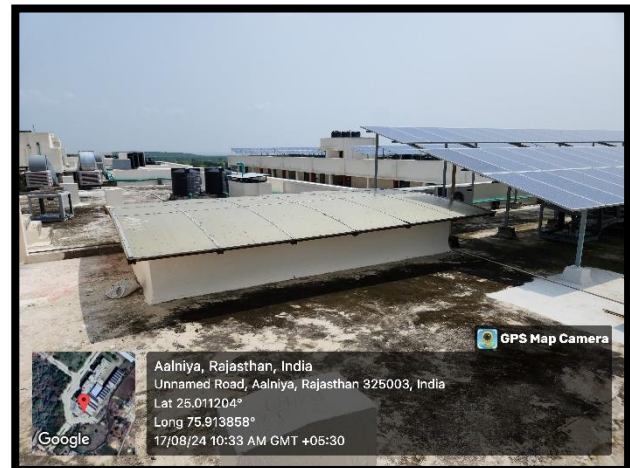
मैसर्स हाइलैटी हाउस कीपिंग एंड  
सिक्योरिटी सर्विसेज

(Authorized Signatory)  
  
Auth. Sign.

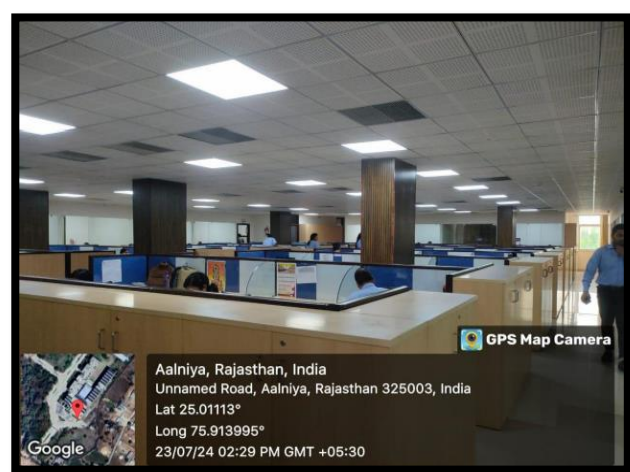
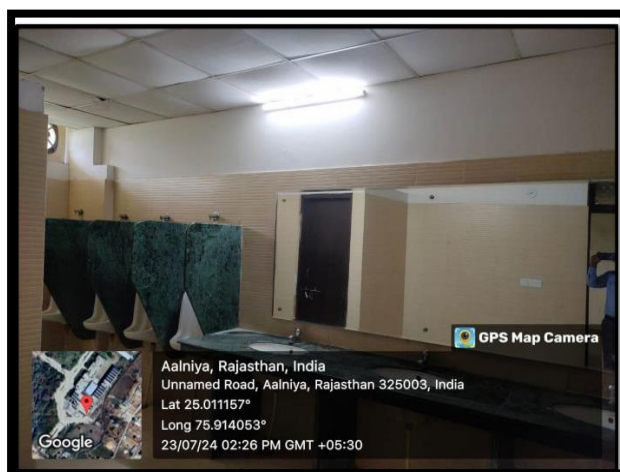
## 2. Energy Conservation Measures:

- Installation of solar panels to meet part of the university's energy demand.
- Use of LED lighting and energy-efficient appliances to reduce carbon footprint.
- Regular monitoring of electricity consumption to promote energy efficiency.

### Solar Panels



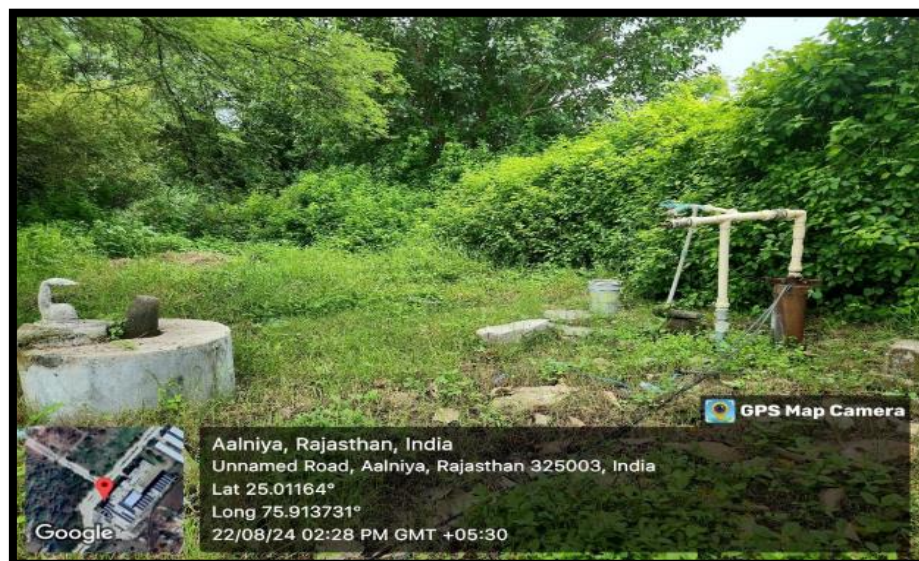
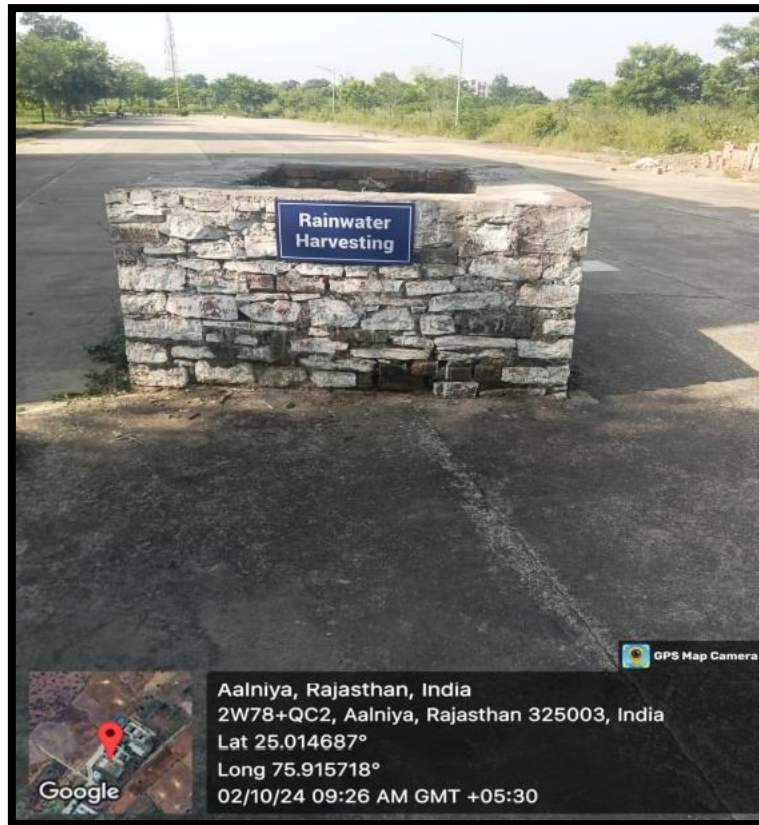
### Use of LED Lights





### 3. Water Conservation and Management:

- Implementation of rainwater harvesting systems.
- Wastewater recycling for gardening and non-potable uses.
- Encouraging minimal water wastage across departments.



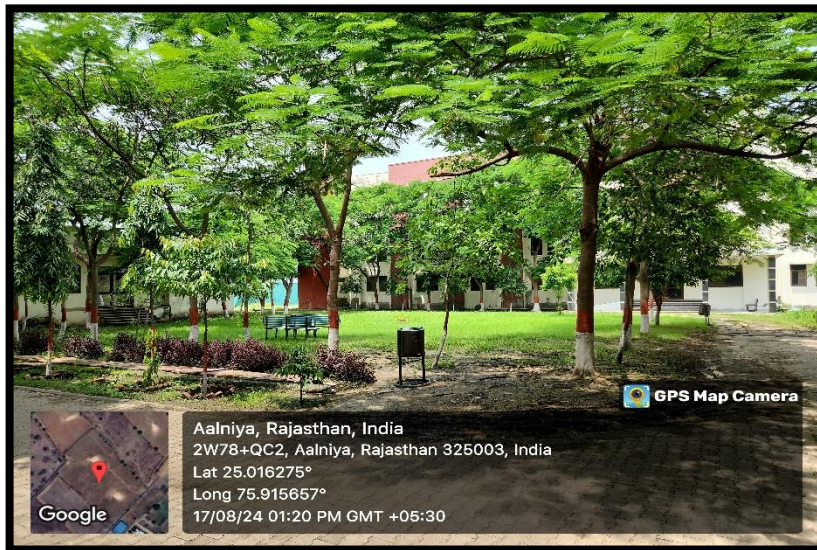


#### 4. Digitalization and Paperless Operations:

- Use of e-governance, online communication, and digital learning platforms to reduce paper use.
- Encouragement of e-submissions and online examinations.

#### 5. Green Campus Initiative:

- Tree plantation drives and maintenance of green belts.
- Plastic-free campus campaigns.
- Promotion of eco-friendly materials and sustainable procurement.





**CAREER POINT  
UNIVERSITY**

**POLICY DOCUMENT ON GREEN CAMPUS  
PLASTIC FREE CAMPUS**

  
**REGISTRAR**  
Career Point University  
Kota - Rajasthan

National Highway 52, Opp. Alaniya Mata Ji Mandir, Alaniya, Kota, Rajasthan 325003. India





# CAREER POINT UNIVERSITY

## GREEN CAMPUS POLICY

The green campus concept of Career Point University, Kota (CPU) offers an opportunity to take the lead in the use of resources and activities that have an impact on the external environment through physical, economic or social interventions. Conservation of natural resources, zero waste zone, water conservation, renewable energy are key factors when it comes to sustainability of the environment.. CPU, through its faculty members, students and staff, seeks to make a positive impact on the environment at the campus through significant environmental sustainability initiatives. CPU plays a leading role in developing a culture of growth and development through sustainable practices. CPU is very much conscious about environment conservation with its green campus initiatives and maintains pollution free and clean campus.

University plays a crucial role in protecting the environment and keeping campus green. In accordance with this broad vision focusing on developing 'Green Campus', the CPU 'Green Campus Policy' affirms its commitment to recognizing environment and sustainability related issues at campuses and demonstrates its intention to address those issues through continual improvement in developing sound environmental policies and safe operational and sustainable practices in compliance with the national mandates and guidelines framed by the Govt. of India.

### Objectives of the Policy:

- To keep our campus as much green as possible.
- To keep environmental balance through tree plantations.
- To create awareness among the students.
- Green campus initiatives are becoming an integral part of the modern-day education system and the University can act as pioneers in promoting these principles within society. Our University has initiated the green campus program in order to support a sustainable and climate-friendly environment.
- The main objectives for these initiatives were environmental awareness and education, the use of sustainable energy and energy efficient measures, comprehensive recycling and composting and green landscaping in the campus. Sustainable environment in university campus impacts students' lives positively on a daily basis as well.

### The Context:

Following will help us to implement the green initiatives In order to implement the green initiatives:

Such initiatives are possible only by cooperation for those involved. Motivation of employees and students to implement green initiatives like minimal use of plastic, minimal use of air conditioners,

  
**REGISTRAR**  
Career Point University  
Kota - Rajasthan



# CAREER POINT UNIVERSITY

switching of lights/fans, use eco-friendly methods of transportation, CNG vehicles etc. are very important and relevant. As a non-residential campus, faculty members and staff members come here in their own cars. The culture of car-pooling needs to be encouraged.

## **The Practice:**

### **1. Restricted entry of automobiles-**

The vehicles owned by the students are not permitted into the campus. These vehicles have been parked at the vehicle stand situated at the entrance of the university. A guard is also there to supervise that no vehicles can cross into the boundary of University. This practice makes the University pollution free, eco-friendly campus. Also, this is a security measure that is mandatory to be followed by the students.

### **2. Use of Bicycle/ Battery powered vehicles-**

Students of nearby places/ hostels are encouraged to come to university by bicycle as a mode of transport for attending University.

### **3. Pedestrian Friendly pathways-**

As student's vehicles are not allowed in University campus, to walk from the entrance of University to the main University gate, a systematic friendly pathway is constructed throughout the way. Students and staff experience comfort walking through the pedestrian friendly pathway.

### **4. Landscaping Initiatives with trees and plants**

Sustainable infra-structure is a vital part of the University campus, providing space for study, play, outdoor events, relaxation and aesthetic appreciation. Green campus and landscape also helps to recharge ground water, clean and cool air in campus. There are a number of trees, shrubs, medicinal plants on campus along with grass cover. Green cover of the University is home for a number of insects and bird species.

The University has a proper canopy of trees and plants throughout its pedestrian pathway. This gives a beautiful look to the University campus with a pollution free environment. A gardener has been appointed for taking care and watering of these trees from time to time. Every year the plantation program is done by NSS units as well as the environmental committee. In Spite of the above, the University is taking initiative for paperless documentation at department level. Internal communication can be done through email or e-message. Electronic gadgets are preferred to store and transfer official data. The different schools/departments as well as the examination section and library are equipped with the latest technology computers to do the paperless work.

### **5. Ban on use of Plastic-**

The University campus is about to be free from the use of plastic. Single use plastic like cups, bottles,

  
**REGISTRAR**  
Career Point University  
Kota - Rajasthan





# CAREER POINT UNIVERSITY

plastic bags, spoons etc. have been avoided to use by the students as well as faculties. Some of the display messages of avoidance of plastic have been tagged at student's frequent places. Moreover, to raise awareness of the vendors near University buildings regarding plastic use, a rally has been taken out by the volunteers of NSS.

## 6. Energy Conservation:

**Use of LED bulbs/ power efficient equipment-** The University is completely renovated by LED bulbs/ power efficient equipment. The traditional power sources have been replaced by LED bulbs. University balconies, staff room, girl's common room, conference room, principal chamber, administrative office etc. places light sources have switched to new LED bulbs with roof ceiling. This replacement gave a complete professional look to the University infrastructure. The policy on energy conservation highlights the development of a proactive and progressive approach to providing energy efficient, responsible, and cost-effective operations on campus. LED lighting, false ceilings to reduce heat load, as well as abundant natural light makes the building energy efficient.

## 7. Water harvesting:

**Rain Water Harvesting-** Ground water harvesting is an important practice mandated by the Government for replenishment of water. The University has constructed a rain water harvesting structure in University campus to ensure that rainwater recharges and improves the ground level. It is connected to all roofs with pipes so that water can harvest accordingly. Water collected through this system, especially used in the water of plants.

**Construction of tanks-** The University has overhead water tanks to supply water in different departments and washrooms. Maintenance of water bodies and distribution system in the campus- The University is completely aware of the repair and maintenance of water tanks. A cleaner is appointed for regularly washing of water overhead tanks as well as water storage tanks. The practice of cleaning has been followed twice in three months. Also the distribution system of water is well organized. The overhead tanks have connected with all departments and washrooms for proper supply of water.

## 8. Clean Campus Initiatives

In accordance with Swachh Bharat Abhiyan, University has committed to actively coordinate cleanliness activities in the University and beyond the campus. A gardener and full time adequate supporting staff are appointed for the maintenance of litter free clean and Green Campus. These initiatives include:

- Generating mass awareness on cleanliness and hygiene amongst students and staff members by holding regular cleanliness drives.
- Activities under 'Swachh Bharat Abhiyan' are a key component of all the community works being done by NSS.

  
**REGISTRAR**  
Career Point University  
Kota - Rajasthan



# CAREER POINT UNIVERSITY

- Teaching faculties and staff members are encouraged to participate in the cleanliness drives.
- Committed to managing waste and maintaining a clean campus especially during University events.
- Conducting various Environment awareness days and tree plantation programs.

## 9. Clean Air Initiatives

Career Point University, Kota encourages students and staff members to use public transportation and car-pooling to control air pollution and strengthen social interaction. Smoking and burning of garbage are strictly prohibited on campus. The abundant natural landscape cleans the air on campus.

## 10. Infrastructure

### a) Grid connected PV Solar System for the campus:

Career Point University, Kota believes in reducing the consumption of electricity by utilizing grid connected PV Solar systems with net metering. These panels are installed on the rooftop of the University building.

### b) Installation of Energy efficient equipment

Career Point University, Kota commits to install environment-friendly electrical appliances that save energy and reduce wastage of energy. Most of the tube lights and lamps are replaced by LEDs in classrooms and passages to minimize the energy consumption.

### c) Water Conservation through Rainwater Harvesting System

Career Point University, Kota has committed to replenish the groundwater table by practicing rainwater harvesting. This practice helps in the replenishment and recharge of the groundwater.

## 11. Waste Management Processes

### a) Liquid waste management

- Maintains leak proof water fixtures timely.
- Proper arrangements of caretakers to take immediate steps to stop any water leakages through taps, pipes, tanks, and toilet flush etc.
- By treating properly Waste-water generated in washrooms through Sewage Treatment Plant (STP).

### b) Solid waste management

Career Point University, Kota will adopt practices to mitigate the generation and manage solid waste through the following methods:

  
**REGISTRAR**  
Career Point University  
Kota - Rajasthan





# CAREER POINT UNIVERSITY

- Systematically engages with the 3Rs (Reduce, Reuse and Recycle) for an eco friendly environment.
- Collects paper waste on campus and sends it for recycling.
- Take initiatives to spread awareness among students about:
  - Food wastage and ways of minimizing it.
  - Minimizing the use of packaged food.
  - Use of degradable waste for composting purposes.

## c) E-waste management

Career Point University, Kota ensures that its usage of technology and generation of E-wastages do not impact the environment. For this purpose, the University plans to strive towards:

- Awareness amongst students about reduction of E-waste and making provisions for environment friendly disposal
- E-waste is given to external agencies for recycling purposes.

## 12. Environment Centric Awareness Activities

Career Point University, Kota encourages awareness programs, plantation program and Cleanliness drive in and out-side of the campus along with celebration of various Environmental days.

## 13. Green Audit

Career Point University, Kota aims to conduct a Green Audit to assess strengths and weaknesses for long- term sustainability. A green audit is a useful tool to determine how and where most energy or water resources are being used. University can then consider how to implement changes and make savings. It can determine the type and volume of waste. Green auditing will promote financial savings through reduction in the use of resources. It is imperative that the University evaluates its own contributions toward a sustainable future.

## 14. Energy Audit

An Energy Audit is carried out to reduce carbon footprint. The Energy Audit, with its specialized tools will help in identifying wastage of energy. Such inspections often reveal several different flaws which cause a loss of significant amounts of energy which the University will not be able to detect. These flaws often have easy and affordable solutions and provide significant savings.

**REGISTRAR**  
Career Point University  
Kota - Rajasthan



## CAREER POINT UNIVERSITY

### 15. Plastic free campus

The University has been observing most of its duties in terms of solid waste management since its inception. In view of the Government of India's resolution to ban all single use plastics due to the hazardous impact of plastic use and pollution, the college administration strictly bans the use of single use plastics in its premise to make it a "Plastic Free Campus". Following the MHRD and UGC guidelines on 2nd October 2019 to educational Universities across the country, our college has issued a notification to Students and all Stakeholders that there would be a ban implemented on the use of single use plastics on the campus.

The University through NSS, NCC and other clubs conducts sensitization programs on the harmful impact of single-use plastics and mandates all the students to avoid bringing non-bio-degradable plastic items to the University, which include plastic bags, cups, plates, small drinking water bottles, straws and sachets. The University facilitates environmentally friendly substitutes like stainless steel, washable and reusable tumblers at all water units and mandates the canteen to serve only in paper plates and paper cups to systematically ban the use of plastics on the campus. It also encourages the students to sensitize their respective households about the harmful effects of plastics and make their households plastic-free. These strategies are incorporated into the University planning and budgeting processes with the aim of developing a clean and green campus.

  
**REGISTRAR**  
Career Point University  
Kota - Rajasthan



## Contribution through Activities

Here are some of the activities undertaken by Career Point University (CPU) related to **SDG 12: Responsible Consumption and Production** (Responsible Consumption & Production) and how they contribute to this goal:

**Name of Activity** : Waste to Wealth

**Date** : 03-04-2024

### Brief Description of the event

Waste to Wealth activities encompass a range of initiatives and processes aimed at transforming waste materials into valuable resources or products. Here's a detailed description of the typical activities involved:

Distillation of lemongrass oil is a common method used to extract the aromatic compounds from the lemongrass plant. Lemongrass oil is known for its citrusy, fresh scent and is used in various applications, including aromatherapy, perfumery, and as a flavoring agent in food and beverages. Here's a basic outline of the distillation process:

**Harvesting Lemongrass:** The first step involves harvesting fresh lemongrass stalks. It's essential to use fresh plant material for optimal oil yield and quality.

**Chopping:** The harvested lemongrass stalks are then chopped into smaller pieces to increase the surface area for extraction.

**Loading the Still:** The chopped lemongrass is then loaded into a distillation still. The still typically consists of a boiler where water is heated, a vessel where the plant material is placed (often called the "pot" or "copper"), and a condenser where the steam is cooled and collected.

**Steam Distillation:** Water is heated in the boiler, creating steam that passes through the lemongrass material in the pot. As the steam moves through the plant material, it carries the volatile aromatic compounds along with it.

**Condensation:** The steam, now containing the volatile compounds of the lemongrass, is passed through a condenser, where it is cooled and condenses back into liquid form. This liquid, composed of water and lemongrass oil, is collected in a receiving vessel.

**Separation:** Since oil and water do not mix, the collected liquid is allowed to settle, and the lemongrass oil, being less dense, floats on top of the water. The oil is then separated from the water using a separating funnel or a similar device.

**Storage:** The extracted lemongrass oil is then transferred to a clean, dry container for storage. It's important to store the oil in a cool, dark place away from direct sunlight to maintain its potency and freshness.

Formulating Aloe vera gel involves combining Aloe vera gel extract with other ingredients to enhance its properties, stability, and usability. Here's a basic recipe for making Aloe vera gel:

**Ingredients:**

- Aloe vera leaf or Aloe vera gel extract - 100% pure
- Optional additives such as preservatives, thickeners, essential oils, or other beneficial ingredients (e.g., vitamin E oil)

**Prepare the Aloe vera gel extract:**

- If you're using fresh Aloe vera leaves, wash the leaves thoroughly and cut them open lengthwise.
- Scoop out the gel from inside the leaves using a spoon. Make sure to collect only the gel, avoiding the yellowish sap close to the leaf's surface, as it can be irritating to the skin.
- If you're using commercially prepared Aloe vera gel extract, ensure it is 100% pure without added colorants or fragrances.

**Blend the Aloe vera gel:** Place the Aloe vera gel extract in a blender or food processor and blend it until it becomes smooth and uniform in texture. This step helps to break down any clumps and ensures a smooth consistency.

**Add optional additives:** At this stage, you can add optional ingredients such as preservatives (if you plan to store the gel for an extended period), thickeners (to improve the gel's consistency), essential oils (for fragrance or additional benefits), or other beneficial ingredients like vitamin E oil.

**Mix thoroughly:** Blend the Aloe vera gel extract with the optional additives thoroughly until everything is well combined.

**Transfer to a container:** Pour the Aloe vera gel mixture into a clean, sterilized container with an airtight lid. It's essential to use a clean container to prevent contamination and ensure the gel's freshness.

**Label and store:** Label the container with the date of preparation and any relevant information about the ingredients used. Store the Aloe vera gel in the refrigerator to prolong its shelf life and maintain its freshness. Use within a few weeks, especially if you've added preservatives, or follow the expiry date of commercially prepared Aloe vera gel extracts.



**Ecology & Environment Club, CPU**

organizing an **Activity** on

# **Waste to Wealth**

(Distillation of Lemongrass oil, Orange peel oil,  
Formulation of Aloe Vera gel)



03rd April 2024



01:00 pm to 04:00 pm



Pharmacy Labs, CPU



**CAREER POINT  
UNIVERSITY**



**Name of Activity** : Waste to Wealth

**Date** : 16-10-2024

**Brief Description of the event**

- **Waste to Composting Organic Waste:** We will demonstrate how to compost leftover parts of lemongrass and aloe vera to create nutrient-rich organic fertilizers.
- **Essential Oil Extraction:** A workshop will be conducted on how to extract essential oils from lemongrass waste, which can be used in perfumes, soaps, and aromatherapy.
- **Crafting and Eco-Products:** Participants will learn to create handmade eco-friendly products like candles, natural air fresheners, and cosmetics using lemongrass and aloe vera waste.
- **Organic Skincare Development:** Aloe vera waste will be used to make skincare products like soaps, scrubs, and lotions.



**Ecology and Environment Club, CPU**  
is organizing an **Activity** on

**WASTE TO WEALTH**  
(Distillation of Lemongrass oil,  
Aloevera gel formation)

 **16th October 2024**  
 **01:00 PM Onwards**  
 **Pharmaceutical laboratory (C105)**

 **CAREER POINT  
UNIVERSITY**

**Student Coordinator: Muskan Khan and Chetan kumar Nagar**

  
Scan Qr Code  
for Registration



## Contribution through Research and Innovation

Career Point University, Kota, actively contributes to **Sustainable Development Goal 12 (Responsible Consumption and Production)** by promoting sustainable research practices, innovative technologies, and awareness-oriented projects that emphasize resource efficiency, waste reduction, and sustainable lifestyles. The University integrates sustainability principles into its research ecosystem to develop solutions that minimize environmental impact and encourage responsible utilization of natural resources.

### List of Book & Chapters

Sl. No.	Name of the teacher	Title of the book published	Year of publication	ISBN number
01	Ms. Mansi Sharma Shailesh Sharma	Corporate Social Responsibility: Balancing Profitability, Society and Sustainability	2024	978-81-974589-1-0
2	Dr. Arun Sharma	Fundamentals of Environmental Chemistry	2024	978-81-97169304
3	Ms. Richa Gulati	ESG Investing: Practices, Advancements and Challenges	2024	978-81-972154-3-8
4	Ms. Richa Gulati & Dr. Sandeep kumar	The Evolution of Corporate Social Responsibility From Obligations to Opportunity	2024	978-81-972154-3-8
5	Rohitashv Nagar, Deepak Nagar, Narendra Bhinda, Prakash Chand Choudhary	Resource Conservation Technologies (RCTs)-Needs and Future Prospects	2024	978-81-972154-9-0
6	Maina Kumari & Jitendra suman	Advances in Agricultural Procurement Management: Strategies for Efficiency and Sustainability	2024	978-81-972154-1-4
7	Jitendra Suman & Maina Kumari	Agricultural Marketing: Concepts and definitions and classification	2024	978-81-972154-1-4
8	Maina Kuamri & Jitendra Suman	Optimizing Agricultural Logistics: Strategies, Technologies, and Innovations	2024	978-81-972154-1-4
9	Maina Kumari & Jitendra suman	Optimizing Agricultural Supply Chains: Integrating Demand and Operations Management	2024	978-81-972154-1-4
10	Jitendra Suman & Maina Kumari	Revamping Agricultural Practices in India through Contract Farming	2024	978-81-972154-1-4
11	Jitendra Suman & Maina Kumari	Role of Public Sector Institutions in Agricultural Marketing CWC, SWC, FCI, CACP & DMI	2024	978-81-972154-1-4
12	Maina Kumari & Jitendra Suman	Sustainable Management of Natural Resources: Economics, Externalities, and Property Rights	2024	978-81-972154-1-4
13	Maina Kuamri & Jitendra Suman	Transforming Agricultural Supply Chains: The Role of Information Technology and Innovation	2024	978-81-972154-1-4
14	Mahendru Gautam Deepak Nagar Rohitashv Nagar Manish Meena	Future Trends in Agricultural Microbiology- Harnessing Microbes for Sustainable	2024	978-81-972154-2-1

15	Mahendru Gautam Deepak Nagar Rohitashv Nagar Manish Meena	Introduction to Agricultural Microbiology- History, Scope & Importance	2024	978-81-972154-2-1
16	Mahendru Gautam Deepak Nagar Rohitashv Nagar Manish Meena	Microbial Diversity in Agricultural Systems- Bacteria, Fungi and Viruses	2024	978-81-972154-2-1
17	Dr. Vinay Kumar Singh Dr. Dheerendra Kumar	Agricultural Extension Systems	2024	978-81-972751-8-0
18	Dr. Teena Agrawal	Algae Utilization	2024	978-81-975859-0-6
19	Mr. Ravi Ranjan	Green Economy: Transitioning to Sustainable Economic Models	2024	978-81-976548-5-5
20	Ms. Richa Gulati	Project Management for Sustainability: Leading Eco conscious Initiative	2024	978-81-976548-5-5
21	Ms. Richa Gulati	The role of Circular Economy in Sustainable Development	2024	978-81-976548-5-5
22	Dr. Sandeep Kumar	Eco-Friendly Marketing: Engaging Consumers in Sustainable Practices	2024	978-81-976548-5-5
23	Sneha Pathak Chitresh Morlia	CSR And Corporate Accountability: Balancing Business Interests With Social Obligations	2024	978-81-974589-1-0
24	Khushi Jain Dr. Mithlesh Malviya	Demystifying The Nexus Between CSR And Environmental Responsibilities: An Overview	2024	978-81-974589-1-0
25	Naritya Sharma	Implications of Corporate Social Responsibility on Environmental Responsibilities	2024	978-81-974589-1-0
26	Dr. Mahaveer Suman	Optimizing Soil Health for Sustainable Fruit Production	2024	978-81-976548-4-8
27	Dr. Mahaveer Suman	Policy Interventions for Advancing Hi-tech Fruit Production	2024	978-81-976548-4-8
28	Dr. Mahaveer Suman	Precision Nutrient Management for Hi-tech Fruit Production	2024	978-81-976548-4-8
29	Dr. Mahaveer Suman	Rehabilitation Strategies for Fruit Production on Degraded Lands	2024	978-81-976548-4-8
30	Mr. Rohitashv Nagar Mr. Deepak Nagar Mr. Prakash Chand Choudhary Dr. Narendra Kumar Bhinda	Fate and Persistence of Herbicides in Soil: Mechanisms and Environmental Impact	2024	978-81-976863-7-5
31	Dr. Jitendra Suman and Dr. Maina Kumari	Agricultural Finance- meaning, scope and significance	2024	978-81-976863-5-1
32	Dr. Jitendra Suman and Dr. Maina Kumari	Agricultural Credit and its Classification	2024	978-81-976863-5-1
33	Dr. Jitendra Suman and Dr. Maina Kumari	Institutions for Agricultural Finance	2024	978-81-976863-5-1
34	Dr. Maina Kumari and Dr. Jitendra Suman	Agricultural Cooperation: Empowering Farmers for Sustainable Development	2024	978-81-976863-5-1
35	Dr. Maina Kumari and Dr. Jitendra Suman	Empowering Agricultural Communities: The Role of Cooperatives in India's Sustainable Development Journey"	2024	978-81-976863-5-1
36	Dr. Maina Kumari and Dr. Jitendra Suman	Agricultural Cooperatives: Catalysts for Rural Development and Sustainable Agriculture	2024	978-81-976863-5-1



37	Dr. Maina Kumari and Dr. Jitendra Suman	Fostering Agricultural Cooperatives: A Multifaceted Approach through Key Institutions and Collaborative Efforts	2024	978-81-976863-5-1
38	Dr. Maina Kumari and Dr. Jitendra Suman	Unlocking the Potential of Agricultural Cooperatives: Policy Suggestions and Innovative Approaches to Enhance Effectiveness	2024	978-81-976863-5-1
39	Prof (Dr.) M. K. Gupta	Packaging Materials	2024	978-81-977147-0-2
40	Mr. Rahul Kumar Ancheria	Sustainable Harvesting and Ethical Consideration	2024	978-81-977692-4-5
41	Dr. Anita Singh	Lichen : General character's , habitat , morphology and reproduction	2024	978-81-977692-3-8
42	Dr. Abhishek Nagar	Commercial Production of Phytomolecules	2024	978-81-977147-9-5
43	Dr. Anita Singh, Dr. Meenakshi, Noopur Soni	Structure And Reproduction In Lycopodium	2024	978-81-97169359
44	Dr. Anita Singh, Dr. Meenakshi, Noopur Soni	Structure And Reproduction In Selaginella	2024	978-81-97169359
45	Dr. Anita Singh, Dr. Meenakshi, Noopur Soni	Structure And Reproduction In Equisetum	2024	978-81-97169359
46	Dr. Anita Singh, Dr. Meenakshi, Noopur Soni	Structure And Reproduction In Adiantum	2024	978-81-97169359
47	Dr. Anita Singh, Dr. Meenakshi, Noopur Soni	Structure And Reproduction In Marsilea	2024	978-81-97169359
48	Dr. Nitin Nama	Mineral Resources	2024	978-81-972751-0-4
49	Rahul Adhikari	Perfumes	2024	978-81-972751-2-8
50	Nasreen Ansari	Safety, Ethical and Regulatory Aspects of Nanomaterials	2024	978-81-975859-3-7
51	Abhishek Singh, Mrinalini Chandel and Chetan Kumar Nagar	Pesticide effects on our environment	2024	978-81-976548-6-2
52	Sangamesh & Manjula Karadiguddi	Postharvest Physiology of Fruits and Vegetables	2024	978-81-976863-8-2
53	Sangamesh, V. R. Zala, Shivanand Koti, Mallikarjuna K. N	Quality Assessment and Grading	2024	978-81-976863-8-2
54	Shahfahad, Lakshmi Gangal, Subash D. M, Suneel Subray Hegde, Sangamesh & Deepa Terdal	Sustainable Postharvest Management Practices	2024	978-81-976863-8-2
55	Dr. Pratima Rawal	Sustainable Resource Management	2024	978-81-977692-2-1

# 12 RESPONSIBLE CONSUMPTION AND PRODUCTION



**CAREER POINT**  
**UNIVERSITY**

Internal Quality Assurance Cell (IQAC)

Career Point University, Kota

✉ [iqac@cpur.edu.in](mailto:iqac@cpur.edu.in)

🌐 [www.cpur.in](http://www.cpur.in)

Alaniya, Kota, Rajasthan 325003.